



BUILT

BUILT-IN



# BUILT-IN

<i>2</i>	<i>Glem</i>
<i>10</i>	<b>OVENS</b>
<i>25</i>	<b>COMPACT OVENS</b>
<i>29</i>	<b>MICROWAVE OVENS</b>
<i>30</i>	<b>INDUCTION HOBS</b>
<i>34</i>	<b>CERAMIC GLASS HOBS</b>
<i>40</i>	<b>CRYSTAL GAS HOBS</b>
<i>44</i>	<b>GAS HOBS</b>
<i>58</i>	<b>DOMINO HOBS</b>
<i>66</i>	<b>HOODS</b>
<i>75</i>	<i>Tech info</i>

*Glem World*

# PROJECT *and* EMOTION MADE *in* ITALY



Glem brand belongs to Glem Gas group established in 1959 in San Cesario, a few kilometers from Modena, in the heart of Emilia and of this territory it proudly carries on the culinary excellence, the artistic tradition, the spirit of innovation and the craftsmanship of its people. The technological and aesthetic content of our products represents our absolute value, a rigorous and emblematic image of **Made in Italy**. All products Made in Italy are assembled in our local premises and are submitted to strict quality controls so as to grant excellent performances.



# *Glem Experience*

## IO CUCINO *con* GLEM

*I cook with Glem*

“I cook with Glem” encapsulates our renewed identity, based on an impressive heritage of values for sharing, with the product at the centre of episodes from life and personal stories just waiting to be told. Investigating people’s experience of using our products every day places the spotlight on our audience in its dialogue with us through social media interaction.


*Share our experience*

[www.glemgas.com](http://www.glemgas.com)





Io Cucino  
con  
 **GLEM**

  
MADE IN ITALY

*Glem Style*

# GLOBAL *and* SMART CITIZENS

We develop products according to the contemporary living, favouring materials and innovative shapes which grant charming aesthetic, ergonomic shapes, ease of use and maintenance. Our appliances become object of furniture able to perfectly adapt to the latest fashion trends and interior design.

Pragmatism, experience and creativity are the ingredients which have enabled Glem to receive prestigious awards and praises in the design area.











## PRH

### PRH (PRE-HEATING)

*The top models have a PRH (pre-heating) function that allows you to rapidly pre-heat the oven. The oven reaches the temperature of 200°C in few minutes, and thus reduces the total cooking time. The oven emits a tone when it reaches temperature, at which point you can set the cooking function you wish to use.*



## OVENS

# MODERN LOOK, HIGH PERFORMANCE

---



### PIZZA

*This special Pizza program allows you to cook pizzas at the exact same temperature as you would in a wood oven - evenly and in just a few minutes. This program is also perfect for baking fresh focaccia and bread.*



### MULTIFUNCTION GAS OVEN WITH FAN

*Glem has created an innovative oven which combines all the features of a multifunction electric oven with those of a gas oven. The traditional cooking of a gas oven, ideal for roasting and baking, combined with fan forced ventilation provides a great heat distribution for single and multi-level cooking. More recipes prepared in less time and with less energy consumption.*



### PRESET TEMPERATURE

*Thanks to the electronic control of the temperature, the oven will indicate the ideal preset temperature for each function. This function guarantees a constant temperature inside the cavity with optimal cooking results.*



### TANGENTIAL COOLING FAN

*Tangential cooling means the oven remains cooler on the outside, to avoid heating the kitchen furniture or forming condensation. The tangential fan at the top of the oven starts up automatically a few minutes after the oven is turned on, and a thermostat device ensures it continues to run after the oven is turned off until it has cooled down.*



## OVENS

# EASY *and* SAFE COOKING



### **TITANIUM ENAMEL - EASY TO CLEAN**

*Thanks to the low porosity of the titanium enamel, cleaning is so much easier and reduces dirt build up. The titanium enamel is resistant to the attack of acids and maintains its colour over time even after intensive use.*



### **COLD DOOR**

*The external temperatures are reduced thanks to the new oven door. The innovative extraction chimney increases considerably the air flow circulation inside the oven so as to have external temperatures very low.*



### **MULTICHEF (FAN SWITCH)**

*The Multichef allows you select between fan assisted or static cooking in gas ovens. This provides great versatility in cooking times and methods. Simply select the fan with the dedicated knob on the control panel to create perfect heat distribution inside the oven. The accurate and constant temperature of the oven browns dishes perfectly and allows you to cook more than one dish simultaneously, optimising the use of the space inside the oven.*



### **FULL GLASS DOOR**

*The full glass oven inner door grants strength and solidity and it also facilitates the cleanliness since it is completely smooth.*

## Contemporaneo



### GFP16IX

#### Performance and features

Multifunction oven  
Full touch controls with electronic programmer  
Preset temperature  
64 lt oven capacity  
Tangential cooling fan  
Smooth sides with chromed racks  
2 shelves position with telescopic rails

#### Functions: 13



#### Safety

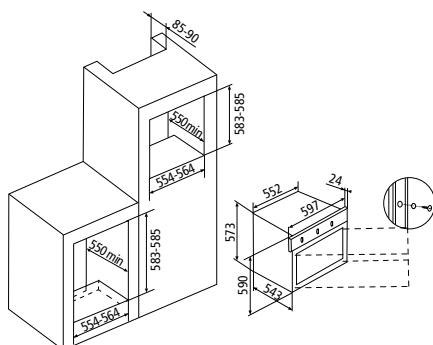
Triple glass cold door

#### Details

Titanium enamelled cavity  
Full flat glass inner door  
Removable inner glass door



**GFP16IX**  
Black glass / St. steel frame



## Contemporaneo



### GFP13IX

#### Performance and features

Multifunction oven  
Led display  
Full touch electronic programmer  
Preset temperature  
64 lt oven capacity  
Tangential cooling fan  
Smooth sides with chromed racks  
2 shelves position with telescopic rails

#### Functions: 11



#### Safety

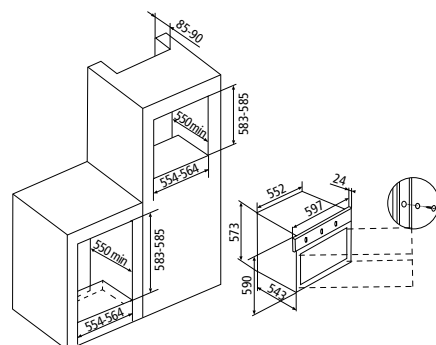
Triple glass cold door

#### Details

Pop-out metal knobs  
Titanium enamelled cavity  
Full flat glass inner door  
Removable inner glass door



**GFP13IX**  
Black glass / St. steel frame





## Contemporaneo



### GFP93IX

#### Performance and features

Multifunction oven  
Electronic touch programmer  
64 lt oven capacity  
Tangential cooling fan  
Smooth sides with chromed racks  
2 shelves position with telescopic rails

#### Functions: 9



#### Safety

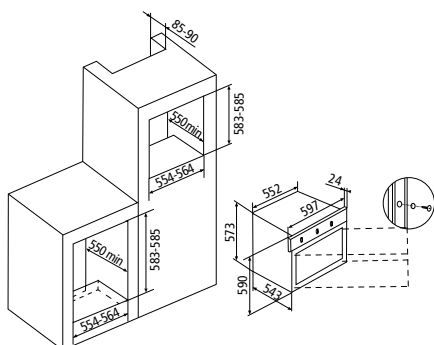
Triple glass cold door

#### Details

Pop-out metal knobs  
Titanium enamelled cavity  
Full flat glass inner door  
Removable inner glass door



**GFP93IX**  
Black glass / St. steel frame



## Stylish



### GFS93IX

#### Performance and features

Multifunction oven  
Electronic programmer  
64 lt oven capacity  
Tangential cooling fan  
Smooth sides with chromed racks

#### Functions: 9



#### Safety

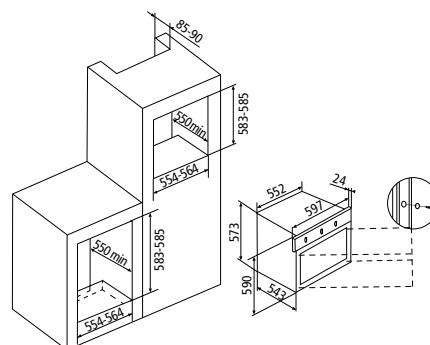
Triple glass cold door

#### Details

Titanium enamelled cavity  
Full flat glass inner door  
Removable inner glass door



**GFS93IX**  
St. steel



*Stylish*



## GFS53IX

### Performance and features

Multifunction oven  
Electronic programmer  
64 lt oven capacity  
Tangential cooling fan  
Smooth sides with chromed racks

### Functions: 5



### Safety

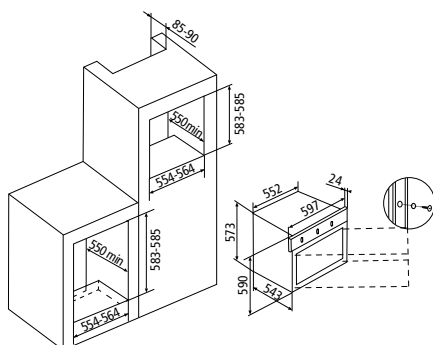
Triple glass cold door

### Details

Titanium enamelled cavity  
Full flat glass inner door  
Removable inner glass door



**GFS53IX**  
St. steel



*Stylish*



## GFS92IX

### Performance and features

Multifunction oven  
Timer 120' end of cooking  
64 lt oven capacity  
Tangential cooling fan  
Smooth sides with chromed racks

### Functions: 9



### Safety

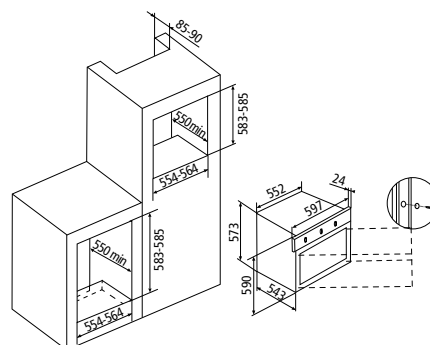
Triple glass cold door

### Details

Titanium enamelled cavity  
Full flat glass inner door  
Removable inner glass door



**GFS92IX**  
St. steel



## Stylish



### GFS52IX

#### Performance and features

Multifunction oven  
Timer 120' end of cooking  
64 lt oven capacity  
Tangential cooling fan  
Smooth sides with chromed racks

#### Functions: 5



#### Safety

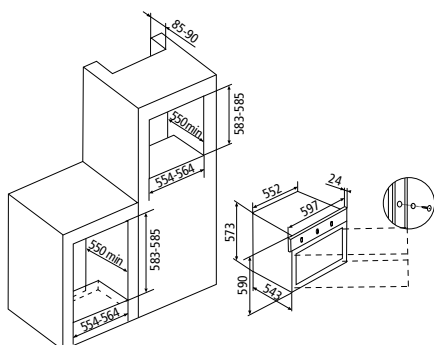
Triple glass cold door

#### Details

Titanium enamelled cavity  
Full flat glass inner door  
Removable inner glass door



**GFS52IX**  
St. steel



## Excellence



### GFEA93IX

#### Performance and features

Multifunction oven  
Electronic programmer  
64 lt oven capacity  
Tangential cooling fan  
Smooth sides with chromed racks

#### Functions: 9



#### Safety

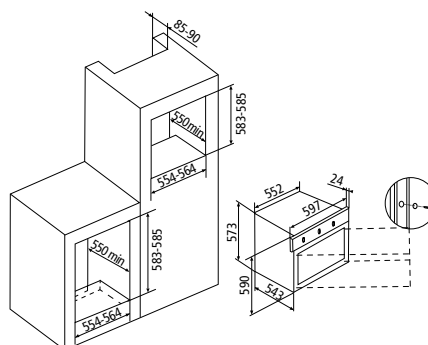
Triple glass cold door

#### Details

Titanium enamelled cavity  
Full flat glass inner door



**GFEA93IX**  
St. steel



*Excellence*



## GFE92IX

### Performance and features

Multifunction oven  
Timer 120' end of cooking  
64 lt oven capacity  
Tangential cooling fan  
Smooth sides with chromed racks

### Functions: 9



### Safety

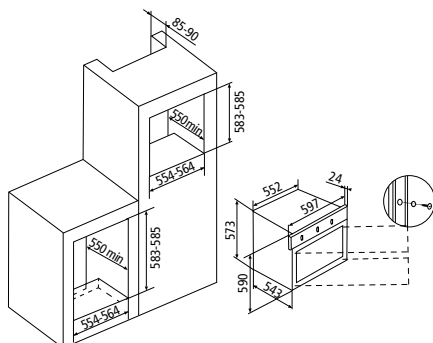
Triple glass cold door

### Details

Titanium enamelled cavity  
Full flat glass inner door



**GFE92IX**  
St. steel



*Excellence*



## GFE52IX

### Performance and features

Multifunction oven  
Timer 120' end of cooking  
64 lt oven capacity  
Tangential cooling fan  
Smooth sides with chromed racks

### Functions: 5



### Safety

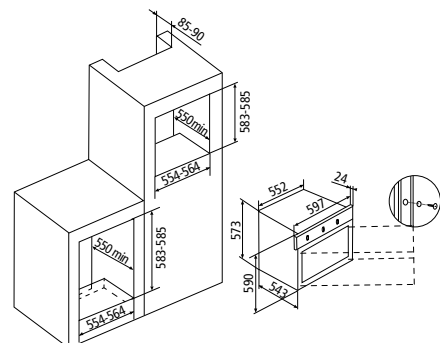
Triple glass cold door

### Details

Titanium enamelled cavity  
Full flat glass inner door



**GFE52IX**  
St. steel



## Excellence



### GFEV21IX - GFEV31IX

#### Performance and features

Multifunction gas oven with fan  
Electric Grill  
60' Minute minder  
63 lt oven capacity  
Turnspit  
Tangential cooling fan  
Smooth sides with chromed racks

#### Functions: 6



#### Safety

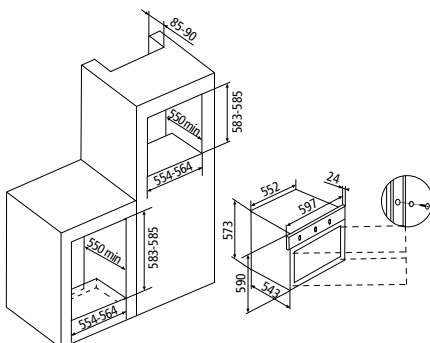
Triple glass cold door

#### Details

Titanium enamelled cavity  
Full flat glass inner door



**GFEV21IX - GFEV31IX (LPG)**  
St. steel



## Excellence



### GFEW21IX - GFEW31IX

#### Performance and features

Multifunction gas oven with fan  
Gas Grill  
60' Minute minder  
60 lt oven capacity  
Turnspit  
Tangential cooling fan  
Smooth sides with chromed racks

#### Functions: 7



#### Safety

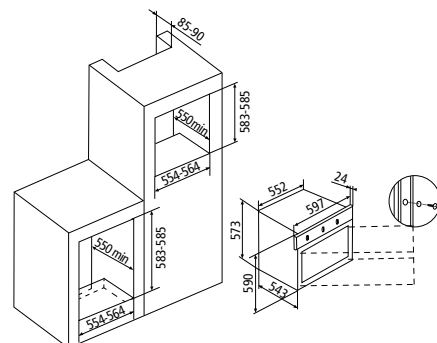
Triple glass cold door

#### Details

Titanium enamelled cavity  
Full flat glass inner door



**GFEW21IX - GFEW31IX (LPG)**  
St. steel



## Excellence



### GFEG21IX - GFEG311X

#### Performance and features

Gas oven  
Gas Grill  
60' Minute minder  
66 lt oven capacity  
Turnspit  
Tangential cooling fan  
Smooth sides with chromed racks

#### Functions: 5



#### Safety

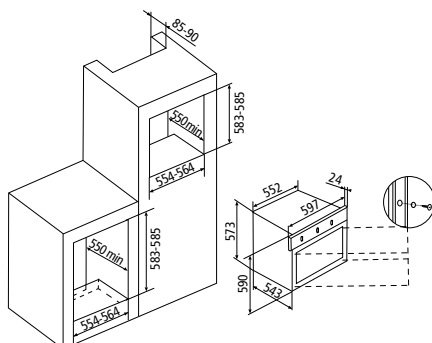
Triple glass cold door

#### Details

Titanium enamelled cavity  
Full flat glass inner door



**GFEG21IX - GFEG311X (LPG)**  
St. steel



## Metropol



### GFM52IX

#### Performance and features

Multifunction oven  
Timer 120' end of cooking  
60 lt oven capacity  
Tangential cooling fan

#### Functions: 5



#### Details

Titanium enamelled cavity  
Full flat glass inner door



GFM52WH



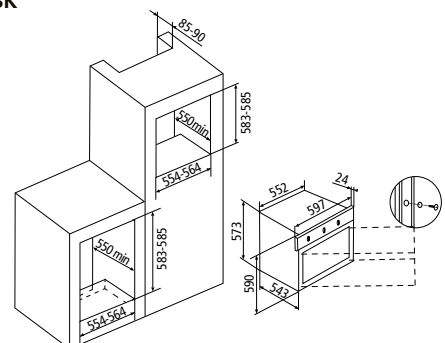
GFM52BK



**GFM52IX**  
St. steel

**GFM52WH**  
White

**GFM52BK**  
Black



## Metropol



### GFMF21IX - GFMF31IX

#### Performance and features

Gas oven  
Electric Grill  
60' Minute minder  
65 lt oven capacity  
Turnspit  
Tangential cooling fan

#### Functions: 5



#### Details

Titanium enamelled cavity  
Full flat glass inner door



GFMF21WH  
GFMF31WH



GFMF21BK  
GFMF31BK

## Metropol



### GFMG21WH - GFMG31WH

#### Performance and features

Gas oven  
Gas Grill  
60' Minute minder  
62 lt oven capacity  
Turnspit  
Tangential cooling fan

#### Functions: 5



#### Details

Titanium enamelled cavity  
Full flat glass inner door



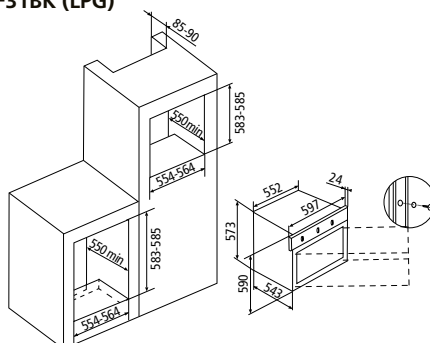
GFMG21BK  
GFMG31BK



**GFMF21IX - GFMF31IX (LPG)**  
St. steel

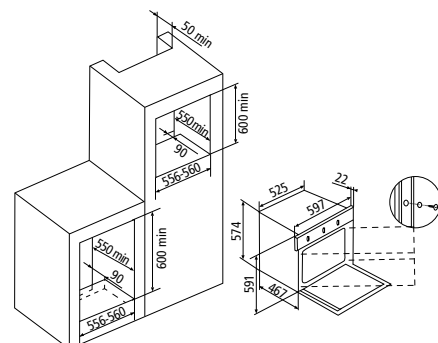
**GFMF21WH - GFMF31WH (LPG)**  
White

**GFMF21BK - GFMF31BK (LPG)**  
Black



**GFMG21WH - GFMG31WH (LPG)**  
White

**GFMG21BK - GFMG31BK (LPG)**  
Black



*Excellence*



## GF9V21IXN - GF9V31IXN

### Performance and features

Multifunction gas oven with fan - 90 cm  
Electric Grill  
60' Minute minder  
95 lt oven capacity  
Turnspit  
Tangential cooling fan  
Smooth sides with chromed racks

### Functions: 10



### Details

Full flat glass inner door



**GF9V21IXN - GF9V31IXN (LPG)**  
St. steel

*Excellence*



## GF9W21IXN - GF9W31IXN

### Performance and features

Multifunction gas oven with fan - 90 cm  
Gas Grill  
60' Minute minder  
88 lt oven capacity  
Turnspit  
Tangential cooling fan  
Smooth sides with chromed racks

### Functions: 10

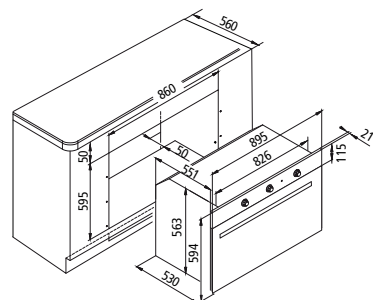
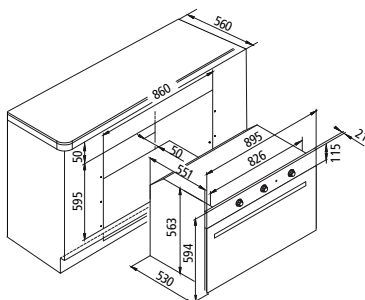


### Details

Full flat glass inner door



**GF9W21IXN - GF9W31IXN (LPG)**  
St. steel





Excellence



GF9F21IXN - GF9F31IXN

Performance and features

- Gas oven - 90 cm
- Electric Grill
- 60' Minute minder
- 105 lt oven capacity
- Turnspit
- Tangential cooling fan
- Smooth sides with chromed racks

Functions: 5



Details

Full flat glass inner door



GF9F21WHN  
GF9F31WHN



GF9F21BKN  
GF9F31BKN

Excellence



GF9G21IXN - GF9G31IXN

Performance and features

- Gas oven - 90 cm
- Gas Grill
- 60' Minute minder
- 95 lt oven capacity
- Turnspit
- Tangential cooling fan
- Smooth sides with chromed racks

Functions: 5



Details

Full flat glass inner door



GF9G21WHN  
GF9G31WHN



GF9G21BKN  
GF9G31BKN



● GF9F21IXN - GF9F31IXN (LPG)  
St. steel

● GF9F21WHN - GF9F31WHN (LPG)  
White

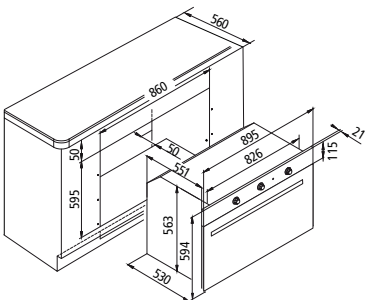
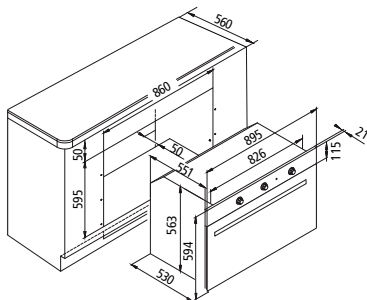
● GF9F21BKN - GF9F31BKN (LPG)  
Black



● GF9G21IXN - GF9G31IXN (LPG)  
St. steel

● GF9G21WHN - GF9G31WHN (LPG)  
White

● GF9G21BKN - GF9G31BKN (LPG)  
Black



# OVENS

## Excellence



### GF993IXN

#### Performance and features

Multifunction oven - 90 cm  
Electronic programmer  
89 lt oven capacity  
Turnspit  
Tangential cooling fan  
Smooth sides with chromed racks

#### Functions: 9



\*Available on grill functions

#### Safety

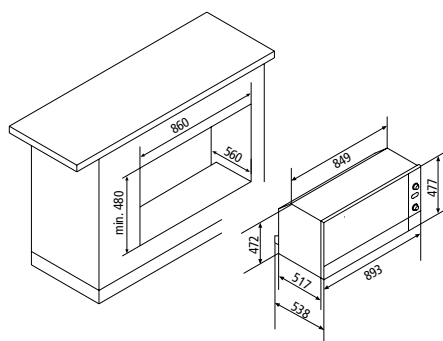
Triple glass cold door

#### Details

Full flat glass inner door



**GF993IXN**  
St. steel



## Contemporaneo



### GFP993IX

#### Performance and features

Multifunction oven - 90 cm  
Electronic touch programmer  
89 lt oven capacity  
Turnspit  
Tangential cooling fan  
Smooth sides with chromed racks

#### Functions: 9



#### Safety

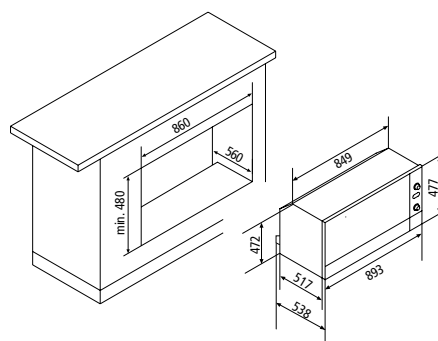
Triple glass cold door

#### Details

Full flat glass inner door



**GFP993IX**  
Black glass / St. steel frame



## COMPACT OVENS

# COMFORT *and* FUNCTIONALITY



## Contemporaneo



### GMC66BK

#### Performance and features

Compact 45 cm combi microwave  
Digital touch controls - red display  
32 lt oven capacity  
Tangential cooling fan  
5 power levels  
Digital clock  
Racks to cook "au gratin" with 2 levels  
32 cm rotary plate

#### Functions: 6

3 automatic recipes / 12 menu  
Electronic timer 0 to 90' with sound signal  
Defrosting by weight/time  
Preset function

#### Safety

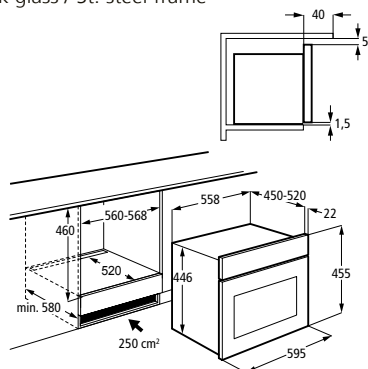
Triple glass cold door  
Drop down quartz grill  
Child safety lock

#### Details

St. steel oven cavity  
Drop down door  
Halogen lights



**GMC66BK**  
Black glass / St. steel frame



## Contemporaneo



### GFCS16BK

#### Performance and features

Compact 45 cm steam oven  
Digital touch controls - red display  
35 lt oven capacity  
Tangential cooling fan  
4 power levels  
Digital clock  
Water tank (1,4 lt)  
Side racks (4 levels)

#### Functions: 5

3 automatic recipes / 12 menu  
Electronic timer 0 to 90' with sound signal  
Defrosting by weight/time  
Preset function

#### Safety

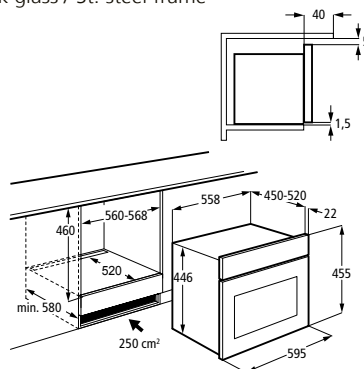
Child safety lock

#### Details

St. steel oven cavity  
Drop down door



**GFCS16BK**  
Black glass / St. steel frame



# COMPACT OVENS

## Contemporaneo



### GFCS86BK

#### Performance and features

Compact 45 cm combi steam oven  
Digital touch controls - red display  
32 lt oven capacity  
Tangential cooling fan  
Water tank (1,4 lt)  
Digital clock  
3 temperatures levels  
Side racks (4 levels)

#### Functions: 5

3 automatic recipes / 12 menu  
Electronic timer 0 to 90' with sound signal  
Defrosting by time  
Preset function

#### Safety

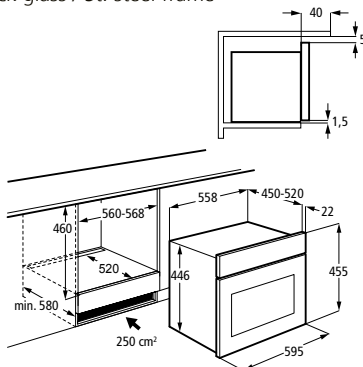
Triple glass cold door  
Child safety lock

#### Details

St. steel oven cavity  
Drop down door



**GFCS86BK**  
Black glass / St. steel frame



## Contemporaneo



### GFCM96BK

#### Performance and features

Compact 45 cm multifunction oven  
Digital touch controls - red display  
40 lt oven capacity  
Tangential cooling fan  
1 shelf position with telescopic rail  
Easy to clean enamelled cavity

#### Functions: 9

Electronic touch programmer with red display  
Preset function

#### Safety

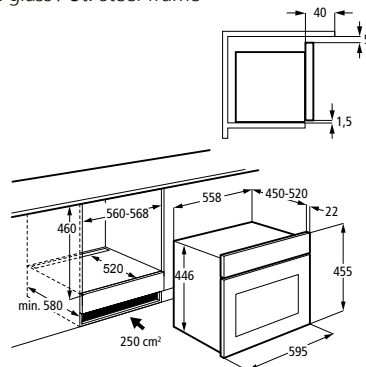
Triple glass cold door

#### Details

Titanium enamelled cavity  
Drop down door  
Halogen lights



**GFCM96BK**  
Black glass / St. steel frame



# DRAWERS

## Accessories

### DRAWER



### WARMING DRAWER



### GFCDIXN - GFCWDIX

#### Performance and features

15 cm drawers  
6 dish servings/settings  
20 dinner plates (ø 28 cm)  
Useful height 10 cm  
Adjustable thermostat 30°-70° C  
(available for warming drawers only)  
Max power 430 W  
(available for warming drawers only)

#### Safety

Thermal protection at 110° C  
(available for warming drawers only)  
Illuminated On/Off switch  
(available for warming drawers only)

#### Details

St. steel drawer cavity  
Push-pull opening system

### DRAWER

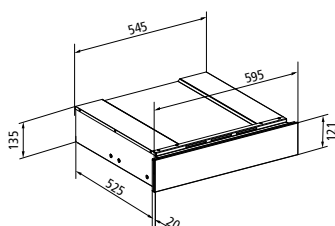


**GFCDIXN**  
Black / St. steel frame

### WARMING DRAWER



**GFCWDIX**  
Black / St. steel frame



# FUNCTIONS



#### OVEN LIGHT

It is operated utilizing the oven functions.



#### PIZZA

Ideal for cooking pizza.



#### PRE-HEATING

This time-saver preheats the oven approx. 30% faster by using all the heating elements at once.



#### TRADITIONAL COOKING

The heat is given by the bottom and upper oven elements. Ideal for pastry cooking and traditional recipes.



#### BOTTOM ELEMENT

Ideal for cooking pies and to give a final touch to the cooking.



#### BOTTOM ELEMENT WITH FAN

The heat of the bottom element is spread through the fan. Ideal for soufflés.



#### UPPER ELEMENT

This function allows direct cooking. Very good for cooking au gratin.



#### STATIC + FAN

The heat given by the bottom and upper elements is spread through the fan.



#### UPPER ELEMENT + FAN

This function allows direct cooking. Very good for cooking big pieces of meat.



#### GRILL

It is used to cook "au gratin". Ideal for cooking "thin" meat.



#### GRILL WITH FAN

The grill along with the fan spreads the heat in a homogenous way. It is ideal for cooking medium and very thick meat.



#### GRILL + TURNSPIT

Ideal for grilling.



#### DOUBLE GRILL

The grill along with the upper element allows grilling on wider areas.



#### DOUBLE GRILL WITH FAN

Ideal for grilling meat and for cooking fish.



#### MULTIFUNCTION (CIRCULAR + FAN)

The fan moves the hot air inside the oven, allowing homogeneous cooking on 3 levels, without spreading any smell.



#### DEFROSTING

The fan is operated without any element. It assures rapid defrosting in few minutes and in the best possible way.



#### LOW TEMP

The fan together with the preset temperature at 40 °C is ideal to defrost in low temperature or maintaining hot cooked dishes.



#### GAS

Traditional gas cooking.



#### GRILL GAS

Ideal for cooking with turnspit.



#### GRILL GAS WITH FAN

The fan spreads the heat produced by the grill gas in a homogeneous way. It is ideal for baking big pieces of meat.



#### GRILL GAS + TURNSPIT

Ideal for baking meats.



#### GRILL GAS WITH FAN + TURNSPIT

The grill gas with fan function is combined with turnspit.



#### GAS + TURNSPIT

Ideal for even cooking.



#### GAS WITH FAN

The fan spreads the heat produced by the gas burner in a homogeneous way.



#### GAS WITH FAN + TURNSPIT

The gas with fan function is combined with turnspit.

# MICROWAVE OVENS



## GMI253IX

### Performance and features

Built-in microwave  
Digital controls  
25 lt oven capacity  
Maximum power: 900 W  
Grill power: 1000 W  
5 power levels  
Digital clock  
Rack to cook "au gratin"  
31,5 cm rotary plate

### Functions

Electronic timer 0 to 95' with sound signal  
Defrosting by weight/time

### Safety

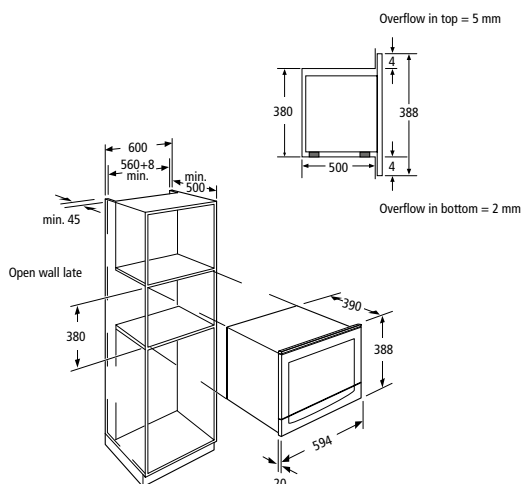
Child safety lock

### Details

St. steel oven cavity



**GMI253IX**  
St. steel



## GMI203IX

### Performance and features

Built-in microwave with grill  
Easy-tronic controls  
20 lt oven capacity  
Maximum power: 800 W  
Grill power: 1000 W  
5 power levels  
Digital clock  
24,5 cm rotary plate

### Functions

Digital timer 95'  
Defrosting by weight/time

### Safety

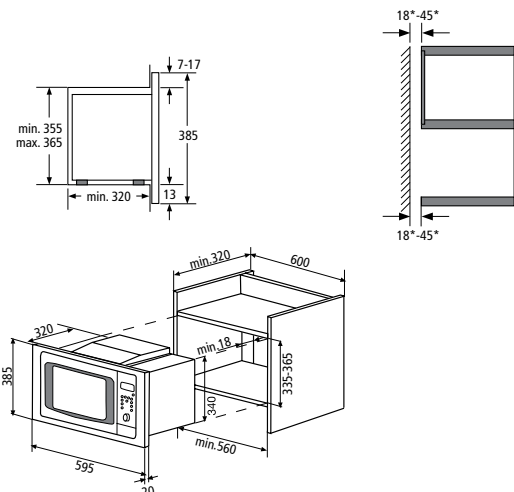
Child safety lock

### Details

St. steel oven cavity



**GMI203IX**  
St. steel





## TIMER

*The Timer function allows you to program the cooking time: when the period of time elapses, the burner turns off automatically.*



## BOOSTER

*When you need to save time and get cooking faster, you can use the booster function. It gives you an extra burst of energy that quickly heats your pan, and its contents, to the highest temperatures. It's perfect when you need to cook faster.*



## OVERFLOW SAFETY DEVICE

*The hob switches off automatically when any water or other liquid overflows.*



## EASY TO CLEAN

*Induction hobs do not convey heat so any spilled or overflowed liquid does not adhere to the surface and can be removed easily with a simple sponge.*



## INDUCTION HOBS

# INDUCTION HOBS, CONTROLLED POWER



### POWER AND CONTROL

*The cooktop itself produces electromagnetic vibrations, which induce the pot or pan to generate its own heat. The results are shorter heat-up times, greater precision and a safer cooking surface.*



### PROTECTION AGAINST BURNS

*Induction does not heat outside the pot space. The heat generated by the pot during use of the hob is not transmitted to the surface around the cooking area. There is also a warning light that indicates residual heat so you know when the area under the pot has cooled down to a safe temperature (< 60° C).*



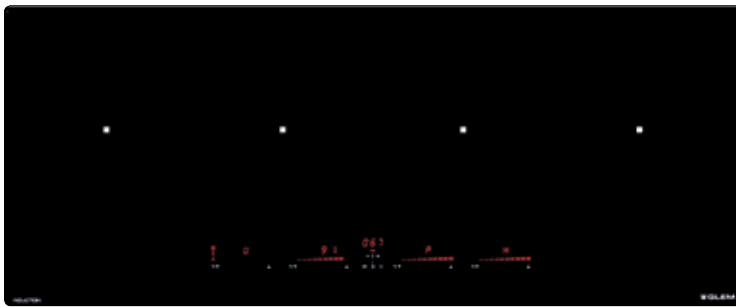
### AUTOMATIC STOP

*It activates automatically if the user forgets to turn off the heating element after cooking. In case there are no power variation within a limited period of time, the heating zone will switch off automatically.*



### AUTOMATIC TEMPERATURES

*Three preset cooking temperatures, allow automatic preparation of a wide range of dishes. After selecting the most suitable cooking temperature (40° - 70° - 90°), you have the possibility to move freely without giving particular attention to the cooking, because a temperature sensor controls and maintains stable the cooking temperature. In this way you will optimize energy consumption with a great cooking result.*



## GTIP14BK

### Performance and features

100 cm induction hob  
 4 zones  
 - left Ø 210 mm - 2900 / 3700 W  
 - central left Ø 210 mm - 2900 / 3700 W  
 - central right Ø 210 mm - 2900 / 3700 W  
 - right Ø 210 mm - 2900 / 3700 W  
 Total power: 7.400 W  
 9 power levels  
 4 slider touch controls  
 Timer

### Functions

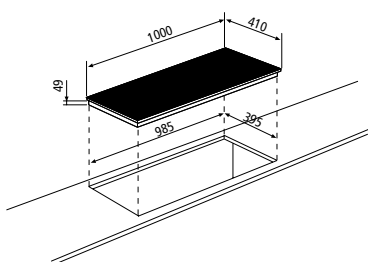
Booster  
 3 automatic temperatures  
 Heat up function: cooking programme featuring temporary booster

### Safety

Child safety lock  
 Automatic temperatures  
 Residual heat indicator  
 Overflow safety device  
 Pot diameter detector  
 Automatic stop



**GTIP14BK**  
 Black ceramic glass



## GTIP84BK

### Performance and features

80 cm induction hob  
 4 zones  
 - front left Ø 280 mm - 2600 / 3700 W  
 - rear left Ø 180 mm - 2300 / 3000 W  
 - front right Ø 210 mm - 2600 / 3700 W  
 - rear right Ø 180 mm - 2300 / 3000 W  
 Total power: 7.400 W  
 9 power levels  
 1 slider touch control  
 Timer

### Functions

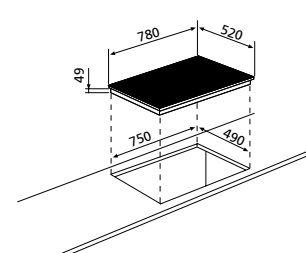
Booster  
 2 automatic temperatures  
 Heat up function: cooking programme featuring temporary booster

### Safety

Child safety lock  
 Automatic temperatures  
 Residual heat indicator  
 Overflow safety device  
 Pot diameter detector  
 Automatic stop



**GTIP84BK**  
 Black ceramic glass



# INDUCTION HOBS



## GTI642

### Performance and features

60 cm induction hob  
4 zones  
- front left Ø 190 mm - 1400 / 2000 W  
- rear left Ø 160 mm - 1200 / 1400 W  
- front right Ø 160 mm - 1200 / 1400 W  
- rear right Ø 200 mm - 2300 / 3000 W  
Total power: 7.100 W  
9 power levels  
Touch control  
Timer


### Functions

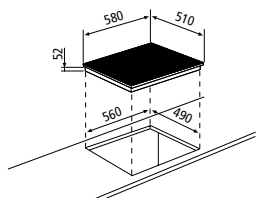
Booster

### Safety

Child safety lock  
Residual heat indicator  
Overflow safety device  
Pot diameter detector  
Automatic stop



 **GTI642**  
Black ceramic glass



## GTI632

### Performance and features

60 cm induction hob  
3 zones  
- front left Ø 190 mm - 1400 / 2000 W  
- rear left Ø 160 mm - 1200 / 1400 W  
- rear right Ø 250 mm - 2300 / 3000 W  
Total power: 6.400 W  
9 power levels  
Touch control  
Timer


### Functions

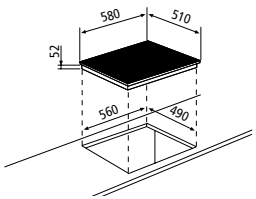
Booster

### Safety

Child safety lock  
Residual heat indicator  
Overflow safety device  
Pot diameter detector  
Automatic stop



 **GTI632**  
Black ceramic glass





## HEAT UP

*The heat up function allows to set the maximum temperature for a limited period of time on the selected cooking zone, then the temperature decreases down to the lower selected value.*



## TIMER

*The Timer function allows you to program the cooking time: when the period of time elapses, the burner turns off automatically.*



## CERAMIC GLASS HOBS

# *The* SOPHISTICATED COOKING



### **CHILDREN SAFETY LOCK**

*This device disables the functions of the hob immediately, preventing a child from adjusting or changing the control settings.*

**OSD**

### **OVERFLOW SAFETY DEVICE**

*The hob switches off automatically when any water or other liquid overflows.*



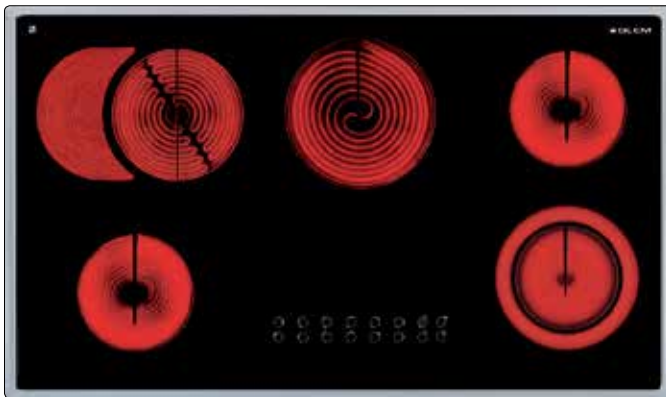
### **AUTOMATIC STOP**

*It activates automatically if the user forgets to turn off the heating element after cooking. In case there are no power variation within a limited period of time, the heating zone will switch off automatically.*



### **RESIDUAL HEAT INDICATOR**

*All of Glem's glass ceramic hobs have a residual heat indicator. When the hob is turned off, the warning light stays on until the hob has cooled down to below 60 °C, in the interest of added safety.*



## GTH96TIX

### Performance and features

90 cm ceramic hob  
5 high-light zones (with 1 dual - 1 extensible hotplates)  
Total power: 8.100 W  
9 power levels  
Touch controls  
Timer

### Functions

Heat up function: cooking program featuring temporary booster

### Safety

Child safety lock  
Residual heat indicator  
Overflow safety device  
Automatic stop

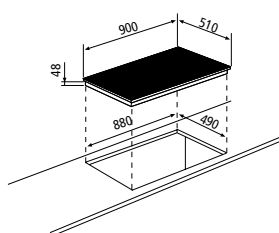


**GTH96TIX**  
St. steel frame / Black

**GTH96T**  
Black (no frame)



GTH96T



## GTH75TIX

### Performance and features

75 cm ceramic hob  
4 high-light zones (with 1 dual - 1 extensible hotplates)  
Total power: 6.700 W  
9 power levels  
Touch controls  
Timer

### Functions

Heat up function: cooking program featuring temporary booster

### Safety

Child safety lock  
Residual heat indicator  
Overflow safety device  
Automatic stop

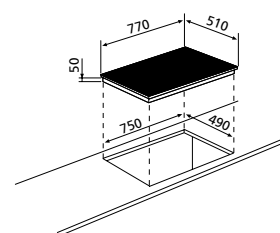


**GTH75TIX**  
St. steel frame / Black

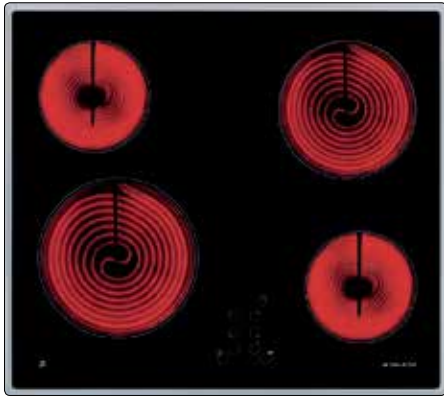
**GTH75T**  
Black (no frame)



GTH75T



# CERAMIC GLASS HOBS



## GTH64TIX

### Performance and features

60 cm ceramic hob  
4 high-light zones  
Total power: 6.400 W  
9 power levels  
Touch controls  
Timer

### Functions

Heat up function: cooking program featuring temporary booster

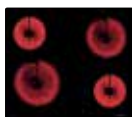
### Safety

Child safety lock  
Residual heat indicator  
Overflow safety device  
Automatic stop

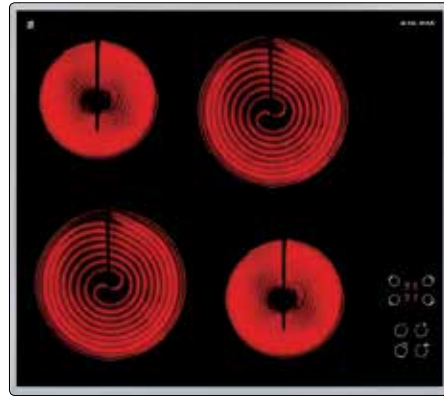
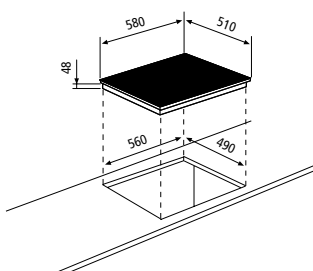


**GTH64TIX**  
St. steel frame / Black

**GTH64TF**  
Black (no frame)



GTH64TF



## GTH6TSIX

### Performance and features

60 cm ceramic hob  
4 high-light zones  
Total power: 6.000 W  
9 power levels  
Touch controls

### Functions

Heat up function: cooking program featuring temporary booster

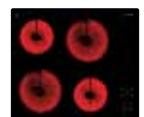
### Safety

Child safety lock  
Residual heat indicator  
Overflow safety device  
Automatic stop

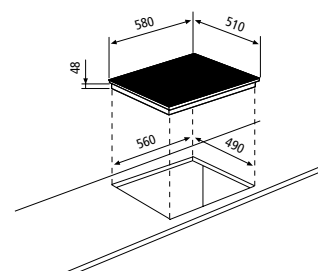


**GTH6TSIX**  
St. steel frame / Black

**GTH64TS**  
Black (no frame)



GTH64TS





## GTHP65T

### Performance and features

60 cm ceramic hob  
4 high-light zones (with 2 extensible hotplates):  
to achieve a fast heat up time  
Total power: 6.700 W  
9 power levels  
Touch controls  
Timer

### Functions

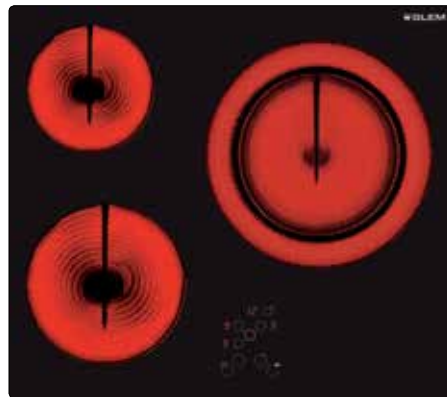
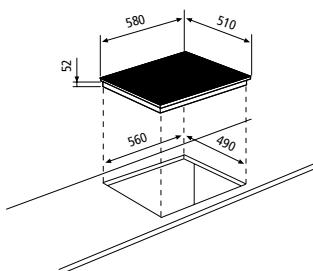
Heat up function: cooking program featuring temporary booster

### Safety

Child safety lock  
Residual heat indicator  
Overflow safety device  
Automatic stop



**GTHP65T**  
Black (no frame)



## GTH63TBK

### Performance and features

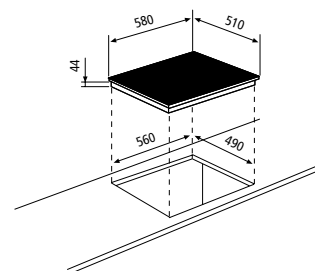
3 high-light zones (with 1 extensible hotplate):  
to achieve a fast heat up time  
Total power: 5.400 W  
9 power levels  
Touch controls  
Timer

### Safety

Child safety lock  
Residual heat indicator  
Overflow safety device  
Automatic stop

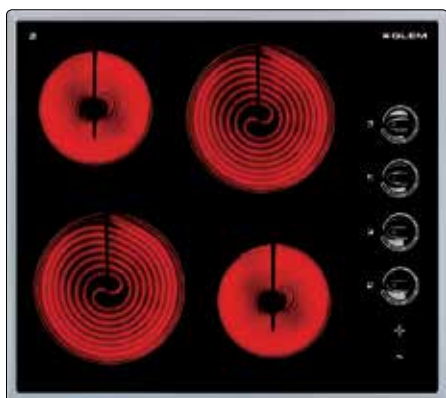


**GTH63TBK**  
Black (no frame)





# CERAMIC GLASS HOBS



## GTH64KIX

### *Performance and features*

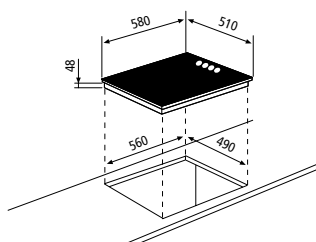
60 cm ceramic hob  
4 high-light zones  
Total power: 6.000 W  
9 power levels  
Side knobs controls

### *Safety*

Residual heat indicator



**GTH64KIX**  
St. steel frame / Black





## CRYSTAL GAS HOBS

---

# PURITY *of* GLASS

---



### TRIPLE RING BURNER

*The special burner with triple ring makes the most out of the power. The special shape of the burner permits uniformity of the flame. The power of 3.3 kW to 3.8 kW ensures maximum efficiency and faster cooking times.*



### ONE-HAND IGNITION

*The one-hand ignition allows to ignite the hob through an easy pression of the knob.*



### CAST IRON PAN SUPPORT

*Cast Iron is a very heat-resistant material that makes hobs long-lasting and similar to the professional ones, from an aesthetical point of view as well as from a functional one. They have been designed with particular attention to safety so that pans of any dimension can be put on them without falling over.*



## GV955BK

### *Performance and features*

90 cm Crystal gas hob  
5 gas burners  
Total power: 10.800 W  
1 Powerful Wok burner: 3.500 W

### *Functions*

One-hand electronic ignition

### *Safety*

Flame failure device (FFD)

### *Details*

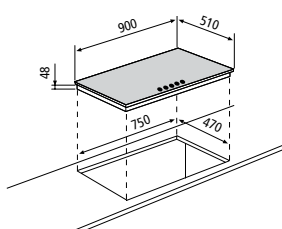
5 singles rounds enamelled pan support



3500 W



**GV955BK**  
Black glass



「Standard cut-out size」



## GV755BK

### *Performance and features*

70 cm Crystal gas hob  
5 gas burners  
Total power: 7.300 W  
1 Powerful Wok burner: 3.500 W

### *Functions*

One-hand electronic ignition

### *Safety*

Flame failure device (FFD)

### *Details*

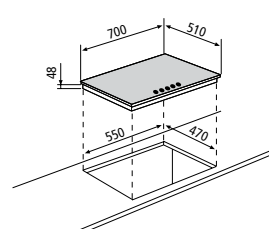
5 singles rounds enamelled pan support



3500 W



**GV755BK**  
Black glass



「Standard cut-out size」

# CRYSTAL GAS HOBS



## GV64BK

### **Performance and features**

60 cm Crystal gas hob  
4 gas burners  
Total power: 7.300 W

### **Functions**

One-hand electronic ignition

### **Safety**

Flame failure device (FFD)

### **Details**

4 singles rounds enamelled pan support



**GV64BK**  
Black glass



## GVP635HBK

### **Performance and features**

60 cm Crystal gas hob  
3 gas burners  
Total power: 6.150 W  
1 Powerful Wok burner: 3.500 W

### **Functions**

One-hand electronic ignition

### **Safety**

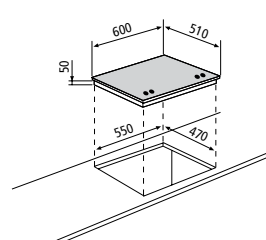
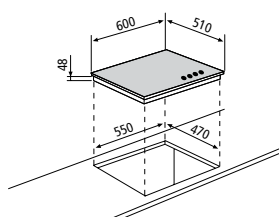
Flame failure device (FFD)

### **Details**

3 singles rounds cast iron pan supports



**GVP635HBK**  
Black glass







## GAS HOBS

# THINK *and* *then* COOK

---



### DUAL BURNER WITH DUAL CONTROL

*This powerful burner allows you to cook any food in the best possible manner and in the best possible time.*

*The dual control means you can adjust the flame for each individual ring at a power of between 0.8 kW and 4.5 kW. It is therefore possible to turn on the central ring or the dual outer ring, or both: for large and small pans, concentrating the heat and energy only where it is needed.*



### TRIPLE RING BURNER

*The special burner with triple ring makes the most out of the power. The special shape of the burner permits uniformity of the flame. The power of 3.3 kW to 3.8 kW ensures maximum efficiency and faster cooking times.*



### ONE-HAND IGNITION

*The one-hand ignition allows to ignite the hob through an easy pression of the knob.*



### CAST IRON PAN SUPPORT

*Cast Iron is a very heat-resistant material that makes hobs long-lasting and similar to the professional ones. They have been designed with particular attention to safety so that pans of any dimension can be placed them without falling over.*



## GT951HIX

### Performance and features

90 cm gas hob  
5 gas burners  
1 Dual Wok burner: 800-4.500 W  
Total power: 12.000 W  
One-hand electronic ignition  
Flame failure device (FFD)

### Details

Cast iron pan supports  
Dedicated Dual Wok area with 2 knobs control



## GT955HIX

### Performance and features

90 cm gas hob  
5 gas burners  
1 Wok burner: 3.800 W  
Total power: 11.300 W  
One-hand electronic ignition  
Flame failure device (FFD)

### Details

Cast iron pan supports



GT955HWH



GT955HBK



4500 W



**GT951HIX (FFD)**  
St. steel



3800 W



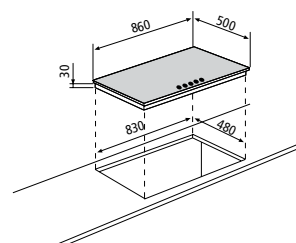
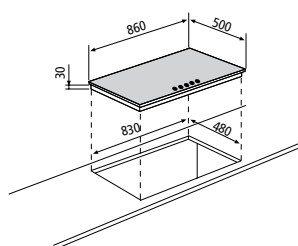
**GT955HIX (FFD)**  
St. steel



**GT955HWH (FFD)**  
White



**GT955HBK (FFD)**  
Black







## GT955IX

### Performance and features

90 cm gas hob  
5 gas burners  
1 Wok burner: 3.800 W  
Total power: 11.300 W  
One-hand electronic ignition  
Flame failure device (FFD)



GT955WH - GT955NWH



GT955BK - GT955NBK

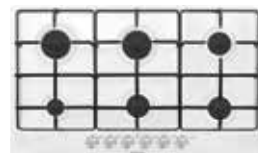
### Details

Matt enamelled pan supports  
Also available without FFD

## GT96NIX

### Performance and features

90 cm gas hob  
6 gas burners  
Total power: 12.250 W  
One-hand electronic ignition



GT96NWH



GT96NBK

### Details

Matt enamelled pan supports



**GT955IX (FFD)**  
St. steel

**GT955WH (FFD)**  
White

**GT955BK (FFD)**  
Black

### Without FFD



**GT955NIX**  
St. steel

**GT955NWH**  
White

**GT955NBK**  
Black

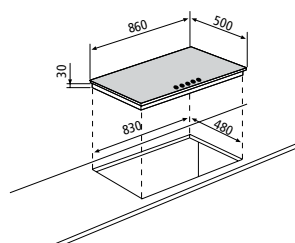
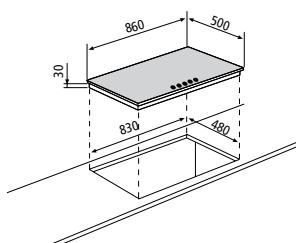
### Without FFD



**GT96NIX**  
St. steel

**GT96NWH**  
White

**GT96NBK**  
Black

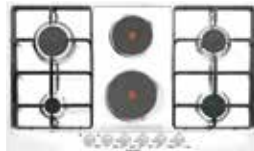




## GT968NIX

### Performance and features

90 cm gas hob  
4 gas burners + 2 hot plates  
Total electrical power: 4.500 W  
Total gas power: 7.500 W  
One-hand electronic ignition



GT968NWH

### Details

Matt enamelled pan supports

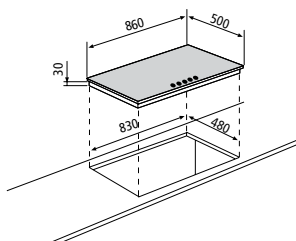


GT968NBK

Without FFD



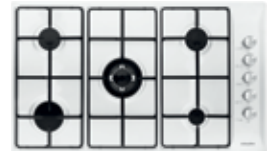
-  **GT968NIX**  
St. steel
-  **GT968NWH**  
White
-  **GT968NBK**  
Black



## GTL955IX

### Performance and features

90 cm gas hob  
5 gas burners  
1 Wok burner: 3.300 W  
Total gas power: 10.800 W  
One-hand electronic ignition  
Flame failure device (FFD)



GTL955WH - GTL955NWH

### Details




Matt enamelled pan supports  
Also available without FFD



GTL955BK - GTL955NBK



3300 W

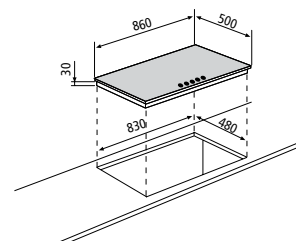
-  **GTL955IX (FFD)**  
St. steel
-  **GTL955WH (FFD)**  
White
-  **GTL955BK (FFD)**  
Black

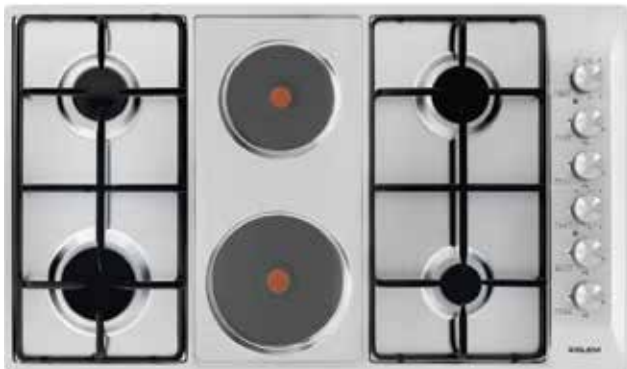
Without FFD



3300 W

-  **GTL955NIX**  
St. steel
-  **GTL955NWH**  
White
-  **GTL955NBK**  
Black





## GTL968IX

### Performance and features

90 cm gas hob  
4 gas burners + 2 hot plates  
Total electrical power: 4.500 W  
Total gas power: 7.500 W  
One-hand electronic ignition  
Flame failure device (FFD)

### Details

Matt enamelled pan supports  
Also available without FFD



GTL968WH - GTL968NWH



GTL968BK - GTL968NBK

## GTS51HIX

### Performance and features

75 cm semi-flush gas hob  
5 gas burners  
1 Dual Wok burner: 800-4.500 W  
Total power: 12.000 W  
One-hand electronic ignition  
Flame failure device (FFD)

### Details

Cast iron pan supports  
Dedicated Dual Wok area with 2 knobs control



Without FFD



4500 W

**GTL968IX (FFD)**  
St. steel

**GTL968WH (FFD)**  
White

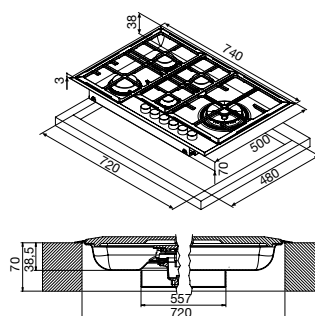
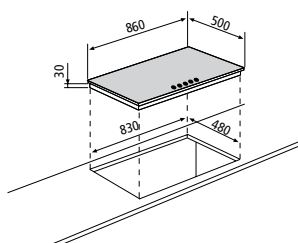
**GTL968BK (FFD)**  
Black

**GTL968NIX**  
St. steel

**GTL968NWH**  
White

**GTL968NBK**  
Black

**GTS51HIX (FFD)**  
St. steel





## GT851HIX

### Performance and features

75 cm gas hob  
5 gas burners  
1 Dual Wok burner: 800-4.500 W  
Total power: 12.000 W  
One-hand electronic ignition  
Flame failure device (FFD)

### Details

Cast iron pan supports  
Dedicated Dual Wok area with 2 knobs control



## GT842HIX

### Performance and features

75 cm gas hob  
4 gas burners  
1 Dual Wok burner: 800-4.500 W  
1 Wok burner: 3.300 W  
Total power: 10.550 W  
One-hand electronic ignition  
Flame failure device (FFD)

### Details

Cast iron pan supports  
Dedicated Dual Wok area with 2 knobs control



4500 W



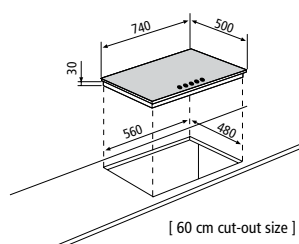
**GT851HIX (FFD)**  
St. steel



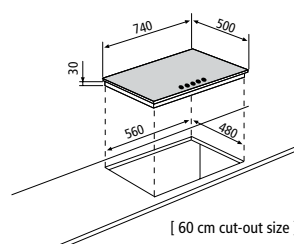
4500 W 3300 W



**GT842HIX (FFD)**  
St. steel



[ 60 cm cut-out size ]



[ 60 cm cut-out size ]



## GT871HIX

### Performance and features

75 cm gas hob  
5 gas burners  
1 Dual Wok burner: 800-4.500 W  
Total power: 12.000 W  
One-hand electronic ignition  
Flame failure device (FFD)

### Details

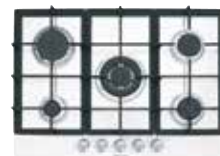
Cast iron pan supports  
Dedicated Dual Wok area with 2 knobs control



## GT755HIX

### Performance and features

70 cm gas hob  
5 gas burners  
1 Wok burner: 3.300 W  
Total power: 10.800 W  
One-hand electronic ignition  
Flame failure device (FFD)



GT755HWH



GT755HBK



4500 W



**GT871HIX (FFD)**  
St. steel



3300 W



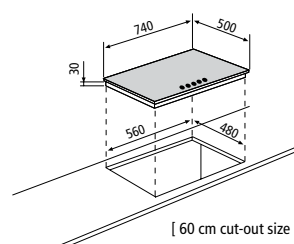
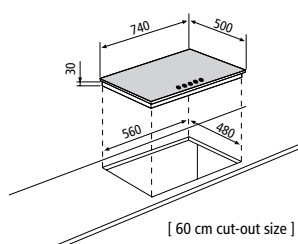
**GT755HIX (FFD)**  
St. steel



**GT755HWH (FFD)**  
White



**GT755HBK (FFD)**  
Black





## GT755IX

### Performance and features

70 cm gas hob  
5 gas burners  
1 Wok burner: 3.300 W  
Total power: 10.800 W  
One-hand electronic ignition  
Flame failure device (FFD)



GT755WH - GT755NWH

### Details

Matt enamelled pan supports  
Also available without FFD



GT755BK - GT755NBK



## GT731IX

### Performance and features

70 cm gas hob  
3 gas burners  
1 Dual Wok burner: 800-4.500 W  
Total power: 8.000 W  
One-hand electronic ignition  
Flame failure device (FFD)

### Details

Matt enamelled pan supports  
Dedicated Dual Wok area with 2 knobs control  
Also available without FFD



3300 W



**GT755IX (FFD)**  
St. steel



**GT755WH (FFD)**  
White



**GT755BK (FFD)**  
Black

### Without FFD



3300 W



**GT755NIX**  
St. steel



**GT755NWH**  
White



**GT755NBK**  
Black



4500 W



**GT731IX (FFD)**  
St. steel

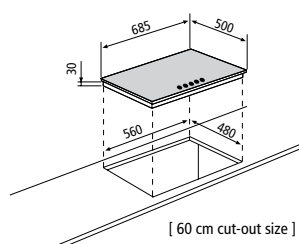
### Without FFD



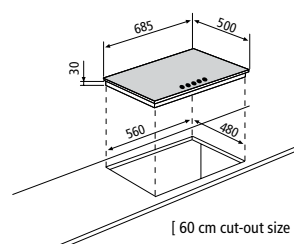
4500 W



**GT731NIX**  
St. steel



[ 60 cm cut-out size ]



[ 60 cm cut-out size ]





## GT685HIX

### Performance and features

60 cm gas hob  
4 gas burners  
1 Wok burner: 3.300 W  
Total power: 8.300 W  
One-hand electronic ignition  
Flame failure device (FFD)

### Details

Cast iron pan supports



GT685HWH



GT685HBK



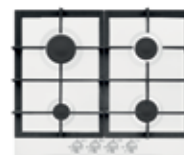
## GT64HIX

### Performance and features

60 cm gas hob  
4 gas burners  
Total power: 7.500 W  
One-hand electronic ignition  
Flame failure device (FFD)

### Details

Cast iron pan supports



GT64HWH



GT64HBK



3800 W



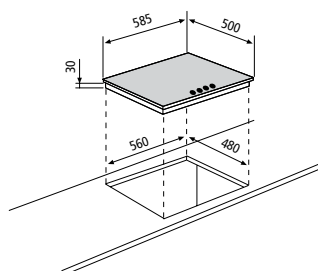
**GT685HIX (FFD)**  
St. steel



**GT685HWH (FFD)**  
White



**GT685HBK (FFD)**  
Black



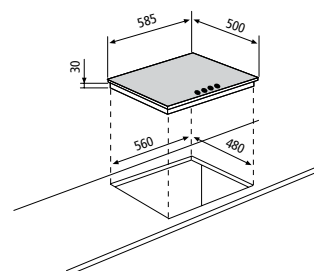
**GT64HIX (FFD)**  
St. steel



**GT64HWH (FFD)**  
White



**GT64HBK (FFD)**  
Black







## GT64IX

### Performance and features

60 cm gas hob  
4 gas burners  
Total power: 7.500 W  
One-hand electronic ignition  
Flame failure device (FFD)

### Details

Matt enamelled pan supports  
Also available without FFD



GT64WH - GT64NWH



GT64BK - GT64NBK



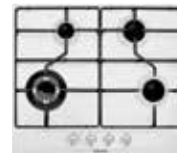
## GT685IX

### Performance and features

60 cm gas hob  
4 gas burners  
1 Wok burner: 3.300 W  
Total power: 8.300 W  
One-hand electronic ignition  
Flame failure device (FFD)

### Details

Matt enamelled pan supports  
Also available without FFD



GT685WH - GT685NWH




GT685BK - GT685NBK



Without FFD



 **GT64IX (FFD)**  
St. steel

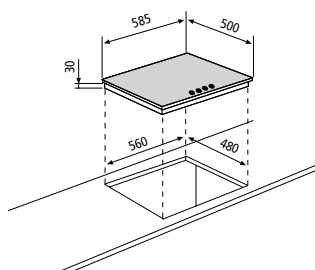
 **GT64NIX**  
St. steel

 **GT64WH (FFD)**  
White

 **GT64NWH**  
White

 **GT64BK (FFD)**  
Black


 **GT64NBK**  
Black




3800 W

Without FFD




 **GT685IX (FFD)**  
St. steel

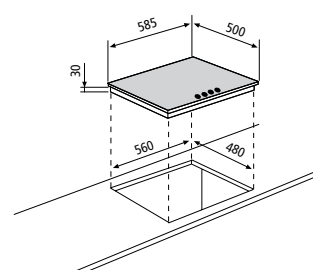
 **GT685NIX**  
St. steel

 **GT685WH (FFD)**  
White

 **GT685NWH**  
White

 **GT685BK (FFD)**  
Black

 **GT685NBK**  
Black





## GT645IX

### Performance and features

60 cm gas hob  
4 gas burners  
1 Wok burner: 3.300 W  
Total power: 9.050 W  
One-hand electronic ignition  
Flame failure device (FFD)

### Details

Matt enamelled pan supports



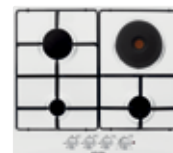
## GT647IX

### Performance and features

60 cm gas hob  
3 gas burners + 1 hot plate  
Total power: 5.750 W  
One-hand electronic ignition  
Flame failure device (FFD)

### Details

Matt enamelled pan supports  
Also available without FFD



GT647WH - GT647NWH



GT647BK - GT647NBK



3800 W



**GT645IX (FFD)**  
St. steel



**GT647IX (FFD)**  
St. steel



**GT647WH (FFD)**  
White



**GT647BK (FFD)**  
Black

Without FFD



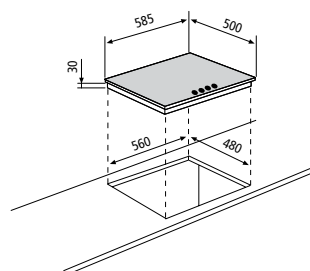
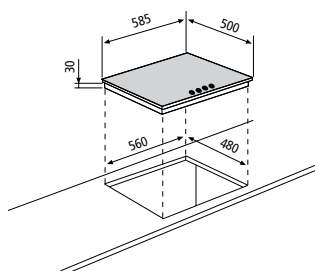
**GT647NIX**  
St. steel



**GT647NWH**  
White



**GT647NBK**  
Black



# GAS HOBS



## GTL64IX

### Performance and features

60 cm gas hob  
4 gas burners  
Total power: 7.500 W  
One-hand electronic ignition  
Flame failure device (FFD)

### Details

Matt enamelled pan supports  
Also available without FFD



GTL64WH - GTL64NWH



GTL64BK - GTL64NBK



## GTL647NIX

### Performance and features

60 cm gas hob  
3 gas burners + 1 hot plate  
Total power: 5.750 W  
One-hand electronic ignition

### Details

Matt enamelled pan supports



GTL647NWH



Without FFD



Without FFD



**GTL64IX (FFD)**  
St. steel



**GTL64NIX**  
St. steel



**GTL647NIX**  
St. steel



**GTL64WH (FFD)**  
White



**GTL64NWH**  
White



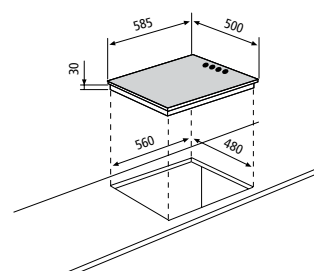
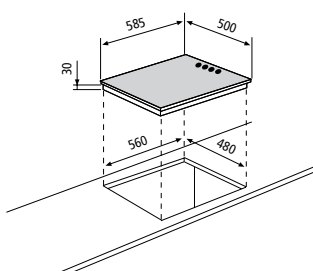
**GTL647NWH**  
White

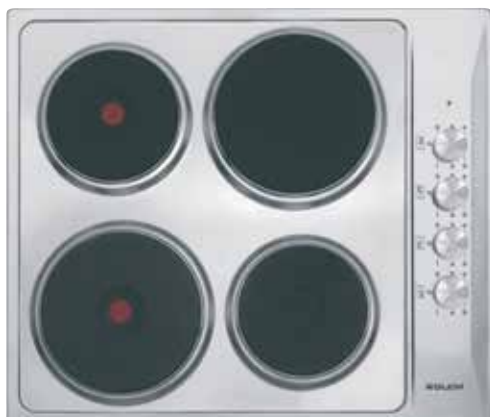


**GTL64BK (FFD)**  
Black



**GTL64NBK**  
Black





## GTL640IX

### *Performance and features*

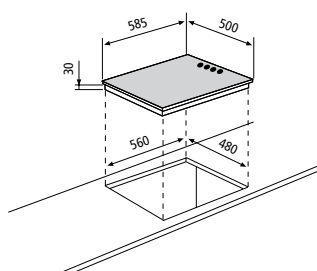
60 cm electric hob  
4 hot plates



GTL640WH

 **GTL640IX**  
St. steel

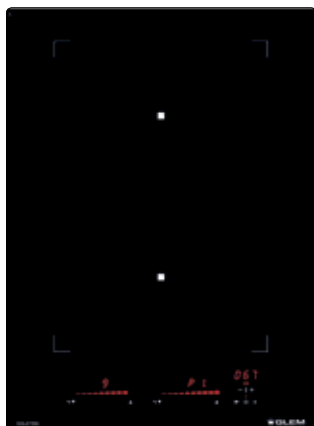
 **GTL640WH**  
White



DOMINO HOBS

# *Your* TAILOR MADE LAYOUT





## GTIP42BK

### Performance and features

38 cm wide – Induction Domino  
2 zones  
Total power: 3.700 W  
9 power levels  
2 sliders touch controls  
Timer

### Functions

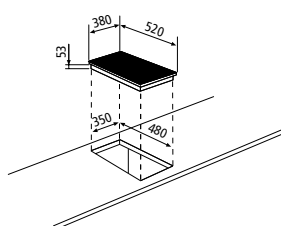
Booster: to increase the power of any cooking zone up to 75%  
3 automatic temperatures  
Heat up function: cooking programme featuring temporary booster  
Bridge function: allows two heating zones to be controlled and treated as one

### Safety

Child safety lock  
Residual heat indicator  
Overflow safety device  
Pot diameter detector  
Automatic stop



**GTIP42BK**  
Black ceramic glass



## GTIPW41BK

### Performance and features

38 cm wide – Wok Domino  
1 Wok burner: 3.000 W  
9 power levels  
1 slider touch control  
Timer

### Functions

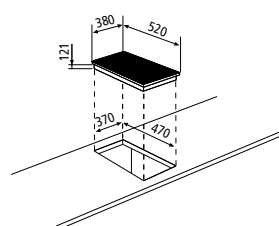
Booster: to increase the power of any cooking zone up to 75%  
3 automatic temperatures  
Heat up function: cooking programme featuring temporary booster

### Safety

Child safety lock  
Residual heat indicator  
Overflow safety device  
Pot diameter detector  
Automatic stop



**GTIPW41BK**  
Black ceramic glass





## GTPN42BK

### Performance and features

38 cm wide – Teppanyaki induction Domino  
 2 independent thermostatically controlled cooking areas  
 Total power: 2.800 W  
 9 power levels  
 Slider touch controls  
 2 timers (1 for egg cooking)  
 Digital clock

### Functions

Temperature regulator between 50° and 220°  
 Memory  
 Bridge function: allows two heating zones to be controlled and treated as one

### Safety

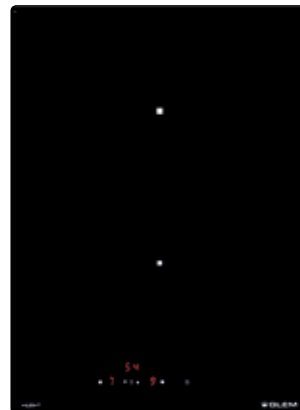
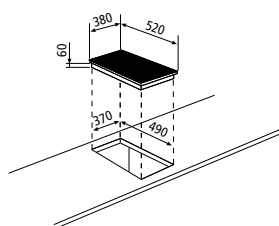
Child safety lock  
 Residual heat indicator  
 Overflow safety device  
 Over temperature cut-off  
 Automatic stop

### Details

Full glass control panel



**GTPN42BK**  
St. steel grill plate



## GTHP42BK

### Performance and features

38 cm wide – Ceramic Domino  
 2 high-light zones: to achieve a fast heat up time  
 Total power: 3.000 W  
 9 power levels  
 Digital controls  
 Digital clock  
 2 Timers (1 for the egg cooking)

### Functions

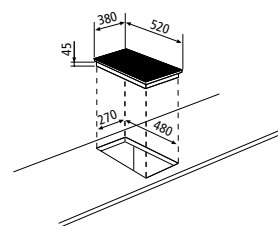
Automatic cooking  
 Booster: to increase the power of any cooking zone up to 75%

### Safety

Child safety lock  
 Residual heat indicator  
 Over temperature cut-off  
 Overflow safety device  
 Automatic stop



**GTHP42BK**  
Black ceramic glass







## GVP415HBK

### Performance and features

38 cm wide – High power Ceramic Domino gas  
1 Powerful Wok: 5.000 W

### Functions

One-hand electronic ignition

### Safety

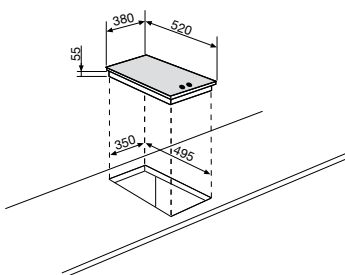
Flame failure device (FFD)

### Details

Single round cast iron pan support  
Wok support



**GVP415HBK**  
Black ceramic glass



## GVP42HBK

### Performance and features

38 cm wide – Ceramic Domino gas  
2 gas burners  
Total power: 4.000 W

### Functions

One-hand electronic ignition

### Safety

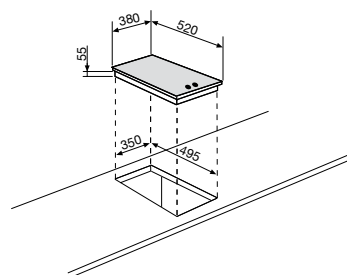
Flame failure device (FFD)

### Details

2 Singles rounds cast iron pan supports  
Wok support



**GVP42HBK**  
Black ceramic glass





## GT415HIX

### **Performance and features**

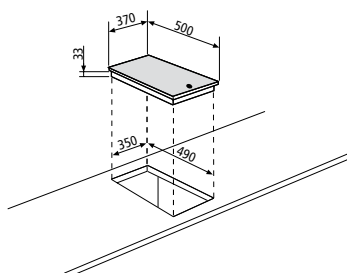
37 cm wide – Domino gas  
1 Powerful Wok: 3.800 W  
One-hand electronic ignition  
Flame failure device (FFD)

### **Details**

Cast iron pan support



**GT415HIX**  
St. steel



## GT42HIX

### **Performance and features**

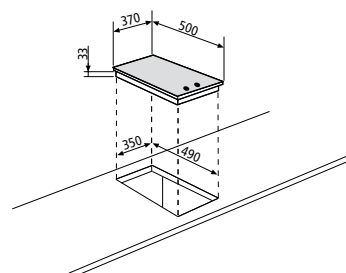
37 cm wide – Domino gas  
2 gas burners  
Total power: 4.000 W  
One-hand electronic ignition  
Flame failure device (FFD)

### **Details**

Cast iron pan support



**GT42HIX**  
St. steel





## GTI322

### Performance and features

30 cm wide – Induction Domino  
 2 zones  
 - front left Ø 160 mm - 1400 W  
 - rear left Ø 200 mm - 1400 / 2000 W  
 Total power: 3.400 W  
 9 power levels  
 Touch controls  
 Timer

### Functions

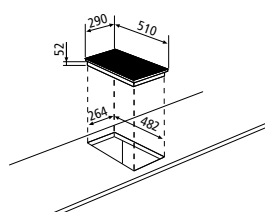
Booster

### Safety

Child safety lock  
 Residual heat indicator  
 Overflow safety device  
 Pot diameter detector  
 Automatic stop



**GTI322**  
 Black ceramic glass



## GTH32K

### Performance and features

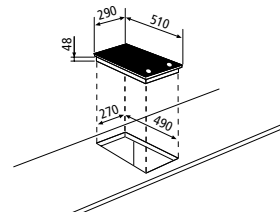
30 cm wide – Ceramic Domino  
 2 high-light zones: to achieve a fast heat up time  
 Total power: 3.000 W  
 9 power levels  
 Frontal knobs controls

### Safety

Residual heat indicator



**GTH32K**  
 Black ceramic glass





## GT315IX

### Performance and features

30 cm wide – Domino gas  
1 Powerful Wok: 3.300 W  
One-hand electronic ignition  
Flame failure device (FFD)

### Details

Matt enamelled pan supports  
Also available without FFD

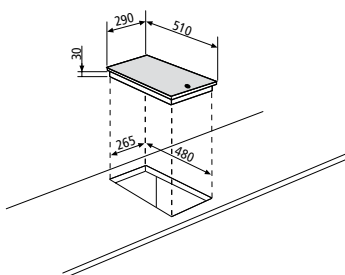


**GT315IX (FFD)**  
St. steel

### Without FFD



**GT315NIX**  
St. steel



## GT32IX

### Performance and features

30 cm wide – Domino gas  
2 gas burners  
Total power: 4.000 W  
One-hand electronic ignition  
Flame failure device (FFD)

### Details

Matt enamelled pan supports  
Also available without FFD

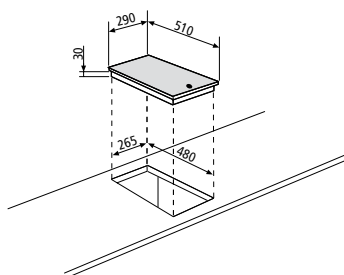


**GT32IX (FFD)**  
St. steel

### Without FFD



**GT32NIX**  
St. steel



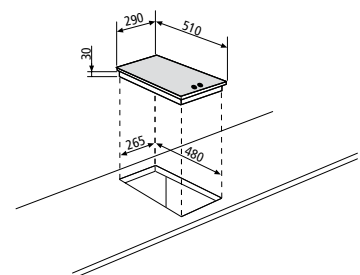
## GT320IX

### Performance and features

30 cm wide – Domino electric  
2 hot plates  
Total power: 3.500 W  
Power on indicator



**GT320IX**  
St. steel





## GT3BIX

### *Performance and features*

30 cm wide – Domino electric  
Barbecue: 2.400 W  
Power on indicator

### *Details*

Enamelled pan support



## GT3FIX

### *Performance and features*

30 cm wide – Domino electric  
Fryer: 2.300 W  
Power on indicator



## GTH32KIX

### *Performance and features*

30 cm wide – Ceramic Domino electric  
2 high-light zones  
Total power: 3.000 W  
Power on indicator



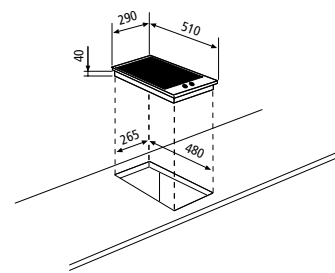
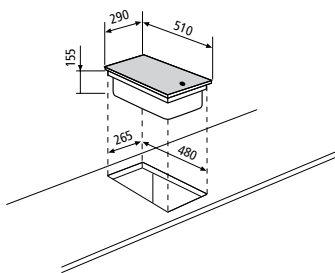
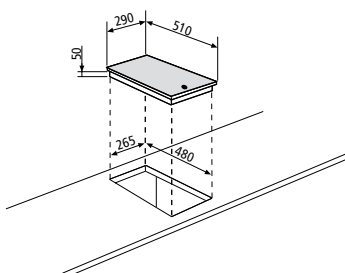
**GT3BIX**  
St. steel



**GT3FIX**  
St. steel



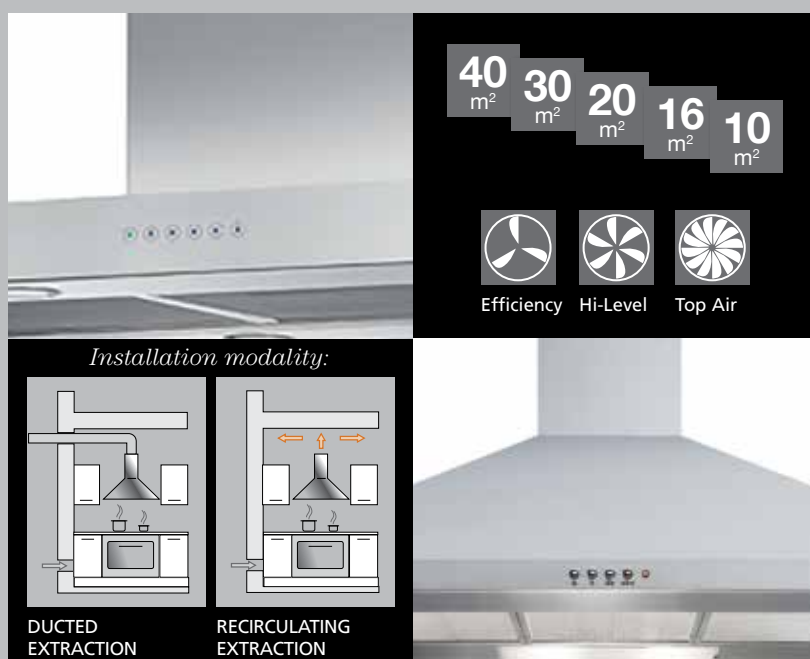
**GTH32KIX**  
St. steel





## HOODS

# POWER *and* SILENCE



40 m<sup>2</sup> 30 m<sup>2</sup> 20 m<sup>2</sup> 16 m<sup>2</sup> 10 m<sup>2</sup>

Efficiency Hi-Level Top Air

Installation modality:

DUCTED EXTRACTION RECIRCULATING EXTRACTION



### PERIMETRAL ASPIRATION

*Thanks to the special restriction created, the perimeter extraction system generates an increase in air speed and reduces the quantity of fumes which escape beyond the hood's extraction rim. The stainless steel panels add prestige to the product for a more elegant, sophisticated look. The flat, smooth surface also makes the hood easier to clean.*



### POWER LEVEL (1 - 2 - 3)

*Glem offers a variety of extractor units so you can select the one best suited to your personal needs.*

### STYLE AND ELEGANCE

*Kitchens are all the more in harmony with the home, with efficient extractor systems that blend in with the design of the furniture. Glem presents a range of updated models with a suitable image and improved functionality that can fit in with any types of kitchen furniture; they can be installed under cabinets or independently on a wall. Made of stainless steel and glass, with sophisticated details, Glem hoods can add elegance to kitchen environments.*

### FILTERS

*There are two types of filter that optimize use of the hoods: a grease filter and an active carbon odour filter (provided as standard with Glem hoods). The grease filter comes in two types: metal or synthetic, and protects the motor by preventing grease in the cooking fumes from damaging it. The metal filter can be cleaned in the dishwasher. The odour filter is an active carbon filter that purifies the air before expelling it back into the kitchen environment.*





## GHB127IX WALL HOOD

### **Performance and features**

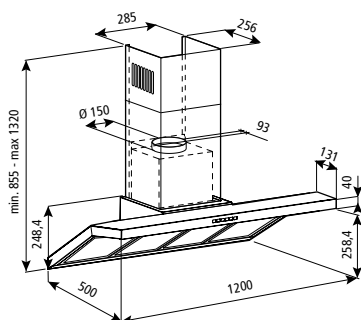
120 cm wide  
Electronic controls  
3 speeds + 1 intensive  
3x1,5W led  
St. steel baffle filters  
Carbon filters  
Maximum extraction rate 740 m³/h

### **Functions**

Delay timer  
Clean Air  
Filters saturation alarm  
Booster: 6' at full power to eliminate intense odours/steam



**GHB127IX**  
St. steel



## GHB98IX ISLAND HOOD

### **Performance and features**

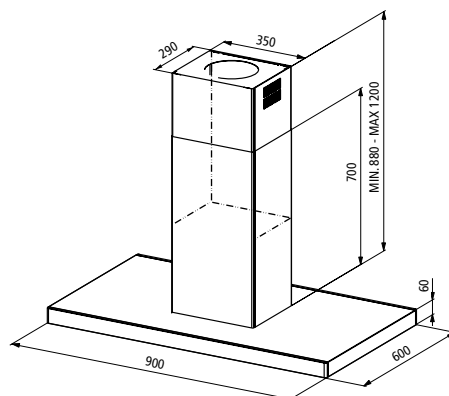
90 cm wide  
Electronic controls  
3 speeds + 1 intensive  
4x20W halogen lamps  
Aluminium grease filters  
Carbon filters  
Maximum extraction rate 700 m³/h

### **Functions**

Filters saturation alarm  
Booster: 10' at full power to eliminate intense odours/steam



**GHB98IX**  
St. steel





## GH598IX WALL GLASS HOOD

### Performance and features

90 cm wide  
Electronic controls  
2 speeds + 1 intensive  
2x20W halogen lamps  
Aluminium grease filters  
Carbon filter  
Maximum extraction rate 735 m³/h

### Functions

Booster: 10' at full power to eliminate intense odours/steam



## GH568IX WALL GLASS HOOD

### Performance and features

60 cm wide  
Electronic controls  
2 speeds + 1 intensive  
2x20W halogen lamps  
Aluminium grease filters  
Carbon filter  
Maximum extraction rate 735 m³/h

### Functions

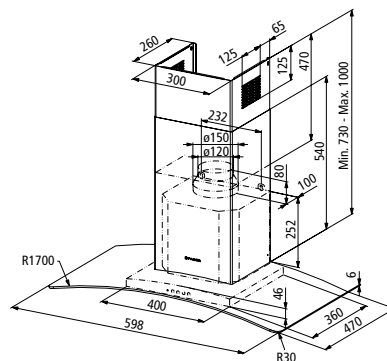
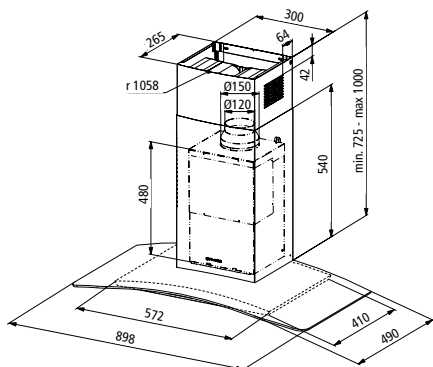
Booster: 10' at full power to eliminate intense odours/steam



**GH598IX**  
St. steel / glass



**GH568IX**  
St. steel / glass





## GHR98IX WALL CURVED HOOD

### **Performance and features**

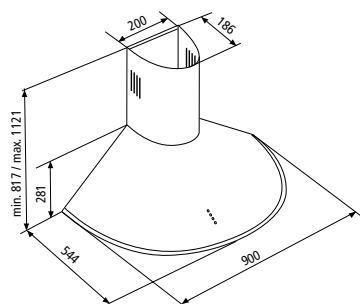
90 cm wide  
Electronic controls  
2 speeds + 1 intensive  
2x20W halogen lamps  
Aluminium grease filters  
Carbon filter  
Maximum extraction rate 735 m³/h

### **Functions**

Booster: 10' at full power to eliminate intense odours/steam



**GHR98IX**  
St. steel



## GHB98IX WALL BOX HOOD

### **Performance and features**

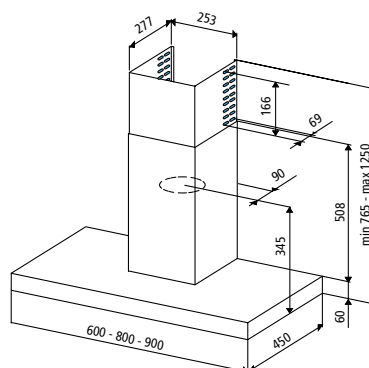
90 cm wide  
Electronic controls  
2 speeds + 1 intensive  
2x20W halogen lamps  
Aluminium grease filters  
Carbon filter  
Maximum extraction rate 735 m³/h

### **Functions**

Booster: 10' at full power to eliminate intense odours/steam



**GHB98IX**  
St. steel





## GHP98IX WALL CHIMNEY HOOD

### Performance and features

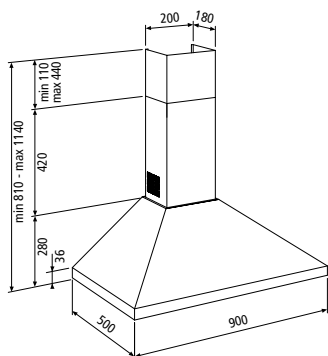
90 cm wide  
Electronic controls  
3 speeds + 1 intensive  
2x20W halogen lamps  
Metallic grease filters  
Carbon filter  
Maximum extraction rate 735 m³/h

### Functions

Delay timer  
Filters saturation alarm  
Booster: 6' at full power to eliminate intense odours/steam



**GHP98IX**  
St. steel



## GHP68IX WALL CHIMNEY HOOD

### Performance and features

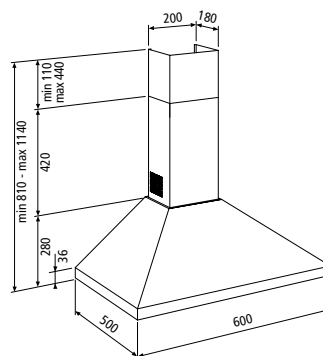
60 cm wide  
Electronic controls  
3 speeds + 1 intensive  
2x20W halogen lamps  
Metallic grease filters  
Carbon filter  
Maximum extraction rate 735 m³/h

### Functions

Delay timer  
Filters saturation alarm  
Booster: 6' at full power to eliminate intense odours/steam



**GHP68IX**  
St. steel





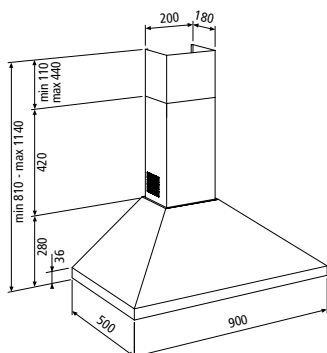
## GHP94IX WALL CHIMNEY HOOD

### *Performance and features*

90 cm wide  
Push buttons  
3 speeds  
2x28W halogen lamps  
Aluminium grease filters  
Carbon filter  
Maximum extraction rate 435 m³/h



**GHP94IX**  
St. steel



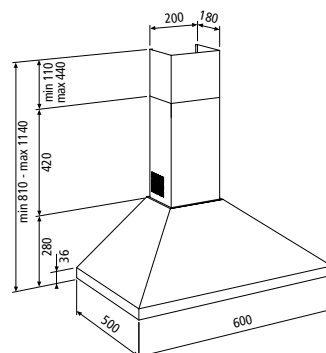
## GHP64IX WALL CHIMNEY HOOD

### *Performance and features*

60 cm wide  
Push buttons  
3 speeds  
2x28W halogen lamps  
Aluminium grease filters  
Carbon filter  
Maximum extraction rate 435 m³/h



**GHP64IX**  
St. steel





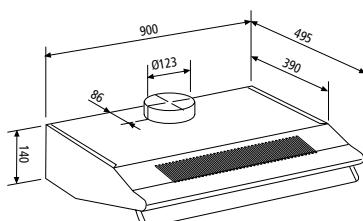
## GHC95IX

### *Performance and features*

90 cm wide  
Push buttons  
3 speeds  
2x28W halogen lamps  
Metallic grease filters  
Carbon filter  
Maximum extraction rate 360 m³/h



**GHC95IX**  
Full St. steel



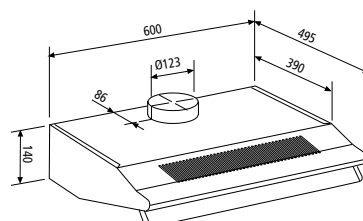
## GHC65IX

### *Performance and features*

60 cm wide  
Push buttons  
3 speeds  
2x28W halogen lamps  
Metallic grease filters  
Carbon filter  
Maximum extraction rate 360 m³/h



**GHC65IX**  
Full St. steel



# HOODS



## GHL90XX - GHL60XX

### Performance and features

90 - 60 cm wide  
Slider controls  
3 speeds  
1x28W halogen lamps  
Acrylic grease filters  
Carbon filter  
Maximum extraction rate 207 m³/h  
Also available 60 Hz



GHL90WH  
GHL60WH



GHL90BK  
GHL60BK

## GHE90SI - GHE60SI

### Performance and features

90 - 60 cm wide  
Slider controls  
3 speeds  
1x28W halogen lamps  
Acrylic grease filters  
Carbon filter  
Maximum extraction rate 171 m³/h



**GHL90XX**  
Full St. steel

**GHL90WH**  
White

**GHL90BK**  
Black



**GHL60XX**  
Full St. steel

**GHL60WH**  
White

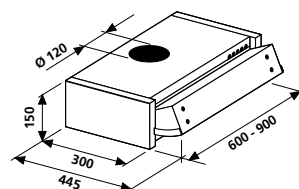
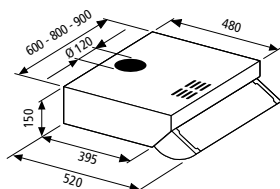
**GHL60BK**  
Black



**GHE90SI**  
Silver



**GHE60SI**  
Silver





# TECHNICAL FEATURES OVENS

		GFP16	GFP13	GFP93	GFS93	GFS53	GFS92
Collection		Contemporaneo	Contemporaneo	Contemporaneo	Stylish	Stylish	Stylish
Type		Multifunction	Multifunction	Multifunction	Multifunction	Multifunction	Multifunction
Colour		IX	IX	IX	IX	IX	IX
Supply		Electric	Electric	Electric	Electric	Electric	Electric
<b>FUNCTIONS</b>							
Programs number		13	11	9	9	5	9
Light		-	-	-	-	-	-
Pizza		•	•	•	•	-	•
Pre-heating		-	•	•	•	-	•
Traditional cooking		•	•	•	•	•	•
Bottom element		-	•	-	-	•	-
Bottom element + fan		•	•	-	-	•	-
Upper element		•	-	-	-	-	-
Grill		•	•	•	•	-	•
Grill + upper element (double grill)		•	-	•	•	-	•
Double grill + fan		•	•	•	•	-	•
Double grill + turnspit		-	-	-	-	-	-
Double grill + fan + turnspit		-	-	-	-	-	-
Grill + fan		•	-	-	-	•	-
Grill + turnspit		-	-	-	-	-	-
Grill + fan + turnspit		-	-	-	-	-	-
Static + fan		•	•	•	•	•	•
Multifunction (circular + fan)		•	•	•	•	-	•
Defrosting		•	•	•	•	-	•
Upper element + fan		•	-	-	-	-	-
Turnspit		-	-	-	-	-	-
Gas		-	-	-	-	-	-
Grill Gas		-	-	-	-	-	-
Grill Gas + fan		-	-	-	-	-	-
Grill Gas + turnspit		-	-	-	-	-	-
Grill Gas + turnspit + fan		-	-	-	-	-	-
Gas + fan		-	-	-	-	-	-
Gas + turnspit		-	-	-	-	-	-
Gas + turnspit + fan		-	-	-	-	-	-
Low temp		•	•	-	-	-	-
<b>PROGRAMMING</b>							
Clock-Oven Control System		Full touch electronic programmer	Full electronic programmer	Touch electronic programmer	Electronic programmer	Electronic programmer	Timer 120' end of cooking
Pre set Temperature		•	•	-	-	-	-
<b>OVEN CAVITY</b>							
Black enamel		-	-	-	-	-	-
Titanium enamel		•	•	•	•	•	•
<b>OVEN CAVITY EQUIPMENT</b>							
n° grids		1	1	1	1	1	1
n° drip tray		2	2	2	2	1	2
Turnspit		-	-	-	-	-	-
n° level with telescopic rails		2 / partial extension	2 / partial extension	2 / partial extension	-	-	-
Other accessories		-	-	-	-	-	-
<b>TECHNICAL FEATURES</b>							
Embossed		-	-	-	-	-	-
Smooth sides with chromed racks		•	•	•	•	•	•
n° door glass		3	3	3	3	3	3
Glass Door Type		Full glass flat	Full glass flat	Full glass flat	Full glass flat	Full glass flat	Full glass flat
Removable door glass		•	•	•	•	•	•
Cold door		•	•	•	•	•	•
Tangential cooling fan		•	•	•	•	•	•
Security gas valve		-	-	-	-	-	-
n° lamps		1 x 25 W	1 x 25 W	1 x 25 W	1 x 25 W	1 x 25 W	1 x 25 W
Net volume	lt	64	64	64	64	64	64
Power	W	2.870	2.870	2.670	2.870	2.670	2.870
Voltage/Frequency	V/Hz	220-240 / 50-60	220-240 / 50-60	220-240 / 50-60	220-240 / 50-60	220-240 / 50-60	220-240 / 50-60
Efficiency energy class <sup>(1)</sup>		A	A	A	A	A	A
Energy consumption conventional <sup>(1)</sup>	kWh/MJ	0,88	0,88	0,88	0,88	0,88	0,88
Energy consumption fan forced <sup>(1)</sup>	kWh/MJ	0,80	0,80	0,80	0,80	0,80	0,80
<b>DIMENSIONS</b>							
Product HxWxD	mm	590x597x543	590x597x543	590x597x543	590x597x543	590x597x543	590x597x543
Built-in HxWxD	mm	583x554x564	583x554x564	583x554x564	583x554x564	583x554x564	583x554x564
Package HxWxD	mm	700x640x640	700x640x640	700x640x640	700x640x640	700x640x640	700x640x640

<sup>(1)</sup> from January 2015, according to regulation 65/2014

Colours legend: BK= Black IX= St. steel WH= White

		GFS52	GFEA93	GFE92	GFE52	GFEV	GFEW
Collection		Stylish	Excellence	Excellence	Excellence	Excellence	Excellence
Type		Multifunction	Multifunction	Multifunction	Multifunction	Gas fan assisted	Gas / Gas Grill
Colour		IX	IX	IX	IX	IX	IX
Supply		Electric	Electric	Electric	Electric	21 (Natural gas G20) 31 (LPG G30)	21 (Natural gas G20) 31 (LPG G30)
<b>FUNCTIONS</b>							
Programs number		5	9	9	5	6	7
Light		-	-	-	-	•	•
Pizza		-	•	•	-	-	-
Pre-heating		-	•	•	-	-	-
Traditional cooking		•	•	•	•	-	-
Bottom element		•	-	-	•	-	-
Bottom element + fan		•	-	-	•	-	-
Upper element		-	-	-	-	-	-
Grill		-	•	•	-	-	-
Grill + upper element (double grill)		-	•	•	-	-	-
Double grill + fan		-	•	•	-	-	-
Double grill + turnspit		-	-	-	-	-	-
Double grill + fan + turnspit		-	-	-	-	-	-
Grill + fan		•	-	-	•	-	-
Grill + turnspit		-	-	-	-	•	•
Grill + fan + turnspit		-	-	-	-	•	-
Static + fan		•	•	•	•	-	-
Multifunction (circular + fan)		-	•	•	-	-	-
Defrosting		-	•	•	-	•	•
Upper element + fan		-	-	-	-	-	-
Turnspit		-	-	-	-	-	-
Gas		-	-	-	-	•	•
Grill Gas		-	-	-	-	-	•
Grill Gas + fan		-	-	-	-	-	-
Grill Gas + turnspit		-	-	-	-	-	-
Grill Gas + turnspit + fan		-	-	-	-	-	-
Gas + fan		-	-	-	-	-	•
Gas + turnspit		-	-	-	-	-	-
Gas + turnspit + fan		-	-	-	-	•	•
Low temp		-	-	-	-	-	-
<b>PROGRAMMING</b>							
Clock-Oven Control System		Timer 120' end of cooking	Electronic programmer	Timer 120' end of cooking	Timer 120' end of cooking	Minute minder 60'	Minute minder 60'
Pre set Temperature		-	-	-	-	-	-
<b>OVEN CAVITY</b>							
Black enamel		-	-	-	-	-	-
Titanium enamel		•	•	•	•	•	•
<b>OVEN CAVITY EQUIPMENT</b>							
n° grids		1	2	1	1	1	1
n° drip tray		1	1	1	1	1	1
Turnspit		-	-	-	-	•	•
n° level with telescopic rails		-	-	-	-	-	-
Other accessories		-	-	-	-	-	-
<b>TECHNICAL FEATURES</b>							
Embossed		-	-	-	-	-	-
Smooth sides with chromed racks		•	•	•	•	•	•
n° door glass		3	3	3	3	3	3
Glass Door Type		Full glass flat	Full glass flat	Full glass flat	Full glass flat	Full glass flat	Full glass flat
Removable door glass		•	-	-	-	-	-
Cold door		•	-	-	-	-	-
Tangential cooling fan		•	•	•	•	•	•
Security gas valve		-	-	-	-	•	•
n° lamps		1 x 25 W	1 x 25 W	1 x 25 W	1 x 25 W	1 x 25 W	1 x 25 W
Net volume	lt	64	64	64	64	63	60
Power	W	2.670	2.868	2.868	2.868	1.350	54
Voltage/Frequency	V/Hz	220-240 / 50-60	220-240 / 50-60	220-240 / 50-60	220-240 / 50-60	220-240 / 50-60	220-240 / 50-60
Efficiency energy class <sup>(1)</sup>		A	A	A	A	A	A
Energy consumption conventional <sup>(1)</sup>	kWh/MJ	0,88	0,718	0,85	0,85	1,59 / 5,71	1,59 / 5,71
Energy consumption fan forced <sup>(1)</sup>	kWh/MJ	0,80	0,98	0,80	0,80	1,77 / 6,37	-
<b>DIMENSIONS</b>							
Product HxWxD	mm	590x597x543	590x597x543	590x597x543	590x597x543	590x597x543	590x597x543
Built-in HxWxD	mm	583x554x564	583/585x554/564x550	583/585x554/564x550	583/585x554/564x550	583/585x554/564x550	583/585x554/564x550
Package HxWxD	mm	700x640x640	690x650x650	690x650x650	690x650x650	690x650x650	690x650x650

<sup>(1)</sup> from January 2015, according to regulation 65/2014

Colours legend: BK= Black IX= St. steel WH= White

# TECHNICAL FEATURES OVENS

	GFEG	GFM52	GFMF	GFMG	GF9V	GF9W
Collection	Excellence	Metropol	Metropol	Metropol	Excellence	Excellence
Type	Gas / Gas Grill	Multifunction	Static Gas/Electric Grill	Static Gas / Gas Grill	Gas / Electric Grill + fan	Gas / Gas Grill + fan
Colour	IX	IX - WH - BK	IX - WH - BK	WH - BK	IXN	IXN
Supply	21 (Natural gas G20) 31 (LPG G30)	Electric	21 (Natural gas G20) 31 (LPG G30)	21 (Natural gas G20) 31 (LPG G30)	21 (Natural gas G20) 31 (LPG G30)	21 (Natural gas G20) 31 (LPG G30)
<b>FUNCTIONS</b>						
Programs number	5	5	5	5	10	10
Light	•	-	•	•	•	•
Pizza	-	-	-	-	-	-
Pre-heating	-	-	-	-	-	-
Traditional cooking	-	•	-	-	-	-
Bottom element	-	•	-	-	-	-
Bottom element + fan	-	•	-	-	-	-
Upper element	-	-	-	-	-	-
Grill	-	-	•	-	•	-
Grill + upper element (double grill)	-	-	-	-	-	-
Double grill + fan	-	-	-	-	•	-
Double grill + turnspit	-	-	-	-	-	-
Double grill + fan + turnspit	-	-	-	-	-	-
Grill + fan	-	•	-	-	-	-
Grill + turnspit	-	-	•	-	•	-
Grill + fan + turnspit	-	-	-	-	•	-
Static + fan	-	•	-	-	-	-
Multifunction (circular + fan)	-	-	-	-	-	-
Defrosting	-	-	-	-	•	•
Upper element + fan	-	-	-	-	-	-
Turnspit	-	-	-	-	-	-
Gas	•	-	•	•	•	•
Grill Gas	•	-	-	•	-	•
Grill Gas + fan	-	-	-	-	-	•
Grill Gas + turnspit	•	-	-	•	-	•
Grill Gas + turnspit + fan	-	-	-	-	-	•
Gas + fan	-	-	-	-	•	•
Gas + turnspit	•	-	•	•	•	•
Gas + turnspit + fan	-	-	-	-	•	•
Low temp	-	-	-	-	-	-
<b>PROGRAMMING</b>						
Clock-Oven Control System	Minute minder 60'	Timer 120' end of cooking	Minute minder 60'	Minute minder 60'	Minute minder 60'	Minute minder 60'
Pre set Temperature	-	-	-	-	-	-
<b>OVEN CAVITY</b>						
Black enamel	-	-	-	-	•	•
Titanium enamel	•	•	•	•	-	-
<b>OVEN CAVITY EQUIPMENT</b>						
n° grids	1	1	1	1	2	2
n° drip tray	1	1	1	1	1	1
Turnspit	•	-	•	•	•	•
n° level with telescopic rails	-	-	-	-	-	-
Other accessories	-	-	-	-	-	-
<b>TECHNICAL FEATURES</b>						
Embossed	-	•	•	•	-	-
Smooth sides with chromed racks	•	-	-	-	•	•
n° door glass	3	2	2	2	2	2
Glass Door Type	Full glass flat	Full glass flat	Full glass flat	Full glass flat	Full glass flat	Full glass flat
Removable door glass	-	-	-	-	-	-
Cold door	-	-	-	-	-	-
Tangential cooling fan	•	•	•	•	•	•
Security gas valve	•	-	•	•	-	-
n° lamps	1 x 25 W	1 x 25 W	1 x 25 W	1 x 25 W	1 x 25 W	1 x 25 W
Net volume	lt 66	60	65	62	95	88
Power	W 54	2.668	1.350	54	-	-
Voltage/Frequency	V/Hz 220-240 / 50-60	220-240 / 50-60	220-240 / 50-60	220-240 / 50-60	220-240 / 50-60	220-240 / 50-60
Efficiency energy class <sup>(1)</sup>	A	A	A	A	A	A
Energy consumption conventional <sup>(1)</sup> kWh/MJ	1,59 / 5,71	0,88	1,59 / 5,71	1,59 / 5,71	2,00 / 7,2	2,00 / 7,2
Energy consumption fan forced <sup>(1)</sup> kWh/MJ	-	0,80	-	-	2,05 / 7,2	2,05 / 7,4
<b>DIMENSIONS</b>						
Product HxWxD	mm 590x597x543	590x597x543	590x597x543	590x597x543	895x594x551	895x594x551
Built-in HxWxD	mm 583/585x554/564x550	583/585x554/564x550	583/585x554/564x550	583/585x554/564x550	860x595x560	860x595x560
Package HxWxD	mm 690x650x650	690x650x650	690x650x650	690x650x650	950x660x660	950x660x660

<sup>(1)</sup> from January 2015, according to regulation 65/2014

Colours legend: BK= Black IX=IXN= St. steel WH= White

	GF9F	GF9G	GF993	GFP993
Collection	Excellence	Excellence	Excellence	Contemporaneo
Type	Static Gas/Electric Grill	Static Gas/Gas Grill	Multifunction	Multifunction
Colour	IXN - WHN - BKN	IXN - WHN - BKN	IXN	IX
Supply	21 (Natural gas G20) 31 (LPG G30)	21 (Natural gas G20) 31 (LPG G30)	Electric	Electric
<b>FUNCTIONS</b>				
Programs number	5	5	9	9
Light	•	•	•	•
Pizza	-	-	•	•
Pre-heating	-	-	-	-
Traditional cooking	-	-	•	•
Bottom element	-	-	•	•
Bottom element + fan	-	-	-	-
Upper element	-	-	-	-
Grill	•	-	•	•
Grill + upper element (double grill)	-	-	•	•
Double grill + fan	-	-	-	-
Double grill + turnspit	-	-	-	-
Double grill + fan + turnspit	-	-	-	-
Grill + fan	-	-	•	•
Grill + turnspit	•	-	-	-
Grill + fan + turnspit	-	-	-	-
Static + fan	-	-	•	•
Multifunction (circular + fan)	-	-	•	•
Defrosting	-	-	-	-
Upper element + fan	-	-	-	-
Turnspit	-	-	-	-
Gas	•	•	-	-
Grill Gas	-	•	-	-
Grill Gas + fan	-	-	-	-
Grill Gas + turnspit	-	•	-	-
Grill Gas + turnspit + fan	-	-	-	-
Gas + fan	-	-	-	-
Gas + turnspit	•	•	-	-
Gas + turnspit + fan	-	-	-	-
Low temp	-	-	-	-
<b>PROGRAMMING</b>				
Clock-Oven Control System	Minute minder 60'	Minute minder 60'	Electronic programmer	Touch electronic programmer
Pre set Temperature	-	-	-	-
<b>OVEN CAVITY</b>				
Black enamel	•	•	•	•
Titanium enamel	-	-	-	-
<b>OVEN CAVITY EQUIPMENT</b>				
n° grids	2	2	2	2
n° drip tray	1	1	1	1
Turnspit	•	•	•	•
n° level with telescopic rails	-	-	-	-
Other accessories	-	-	-	1 Pastry tray (15 mm)
<b>TECHNICAL FEATURES</b>				
Embossed	-	-	-	-
Smooth sides with chromed racks	•	•	•	•
n° door glass	2	2	3	3
Glass Door Type	Full glass flat	Full glass flat	Full glass flat	Full glass flat
Removable door glass	-	-	-	-
Cold door	-	-	•	•
Tangential cooling fan	•	•	•	•
Security gas valve	-	-	-	-
n° lamps	1 x 25 W	1 x 25 W	2 x 25 W	2 x 25 W
Net volume	lt	95	89	89
Power	W	-	2.700	3.500
Voltage/Frequency	V/Hz	220-240 / 50-60	220-240 / 50-60	220-240 / 50-60
Efficiency energy class <sup>(1)</sup>	A	A	A	A
Energy consumption conventional <sup>(1)</sup>	kWh/MJ	2,00	0,98	0,98
Energy consumption fan forced <sup>(1)</sup>	kWh/MJ	1,00	1,05	1,05
<b>DIMENSIONS</b>				
Product HxWxD	mm	895x594x551	895x594x551	893x477x538
Built-in HxWxD	mm	860x595x560	860x595x560	860x480x860
Package HxWxD	mm	950x660x660	950x660x660	980x690x560

<sup>(1)</sup> from January 2015, according to regulation 65/2014

Colours legend: BKN= Black IX-IXN= St. steel WHN= White

# TECHNICAL FEATURES OVENS

		GMC66	GFC516	GFC586	GFCM96
Collection		Contemporaneo	Contemporaneo	Contemporaneo	Contemporaneo
Dimension	mm	600x450	600x450	600x450	600x450
Type		Compact 45 cm combi microwave	Compact 45 cm steam oven	Compact 45 cm combi steam oven	Compact 45 cm multifunction
Colour		BK	BK	BK	BK
<b>MAIN FEATURES</b>					
Functions		6 (MW, Grill, Convection, MW+Grill, MW+Convection, Grill+Fan)	4 + 1 (Steam, Regeneration, Cleaning, Descaling) + Sterilisation	5 (Steam, Hot air, Grill, Steam+hot-air, Grill+hot-air)	9 (Pizza, Traditional cooking, Bottom element, Grill, Double grill + fan, Static + fan, Multifunction (circular+fan), Defrosting, Grill + Bottom)
Oven Capacity	lt	32	35	32	40
<b>FEATURES</b>					
Digital clock		•	•	•	•
Timer		Electronic 0 to 90'	Electronic 0 to 90'	Electronic 0 to 90'	•
Rotary plate		32cm	-	-	-
Defrost functions by time		•	•	•	-
Defrost functions by weight		•	•	-	-
Controls		Digital touch control	Digital touch control	Digital touch control	Digital touch control
Auto menus		3	3	3	-
Power levels		5	4	-	-
Temperature levels	°C	-	-	40 - 60 - 100	-
Microwave power	kW	1,000	-	-	-
Grill power	kW	1,500	-	1,200	1,100/2,600
Convection power	kW	1,700	-	-	2,150
Turbo power		-	-	1,600	1,800
Maximum power	kW	2,750	1,000	2,900	2,973
Combi Microwave / Grill		•	-	-	-
Rack to cook "au gratin"		Rectangular with 2 levels	-	-	-
Inner light		Halogen	•	•	Halogen
Adjustable feet		-	-	-	-
Power cord with plug		•	•	•	-
End cooking signal		•	•	•	•
Preset function		•	•	3 memories	• (preset temperature)
<b>CAVITY AND SAFETY</b>					
Interior cavity		St. steel	St. steel	St. steel	Titanium ETC (AA)
n° glass		3	2	3	3
Safety child lock		•	•	•	•
Tangential cooling fan		•	•	•	•
<b>ACCESSORIES</b>					
Smooth sides with chromed racks		-	• (4 levels)	• (4 levels)	•
Enamelled tray		-	-	-	2 (regular + deep)
Inox tray		2 grids	1 Perforated/ 1 non perforated (40 and 20 mm)	1 Perforated/ 1 non perforated (40 and 20 mm)	1 grid
Water tank	lt	-	1,4	1,4	-
Telescopic grids		-	-	-	1
<b>TECHNICAL FEATURES</b>					
Voltage/Frequency	V/Hz	220-240 / 50	220-240 / 50	230-240 / 50	220-240 / 50-60
Plug Type		Schucko	Schucko	Schucko	-
Efficiency energy class <sup>(1)</sup>		-	-	A+	A
Energy consumption conventional <sup>(1)</sup>	kWh/MJ	-	-	-	-
Energy consumption fan forced <sup>(1)</sup>	kWh/MJ	-	-	0,44	-
Net Oven Capacity	lt	32	35	32	40
<b>WEIGHTS &amp; DIMENSION</b>					
Product WxDxH	mm	595x542x455	595x472x455	595x472x455	595x542x455
Built-in WxHxD	mm	560-568x450x542	560-568x450x542	560-568x450x542	560-568x450x542
Cavity WxDxH	mm	420x390x210	420x390x210	420x390x210	-

<sup>(1)</sup> from January 2015, according to regulation 65/2014

		GFCDN	GFCWD
Collection		Contemporaneo	Contemporaneo
Type		Accessories	Accessories
Colour		IX	IX
<b>MAIN FEATURES</b>			
N° of dish servings/settings		6	6
N° of dinner plates Ø28 cm		20	20
Useful height	cm	10	10
Input power	W	-	430
Adjustable thermostat	°C	-	30-70
Thermostat control		-	Electromechanic
Thermal protection at 110 °C		-	•
Illuminated ON /OFF switch		-	•
Anti-sliding mat		•	•
Opening system		push / pull	push / pull
<b>WEIGHTS &amp; DIMENSIONS</b>			
Product HxWxD	mm	139x595x542	139x595x542
Built-in HxWxD	mm	140x595x542	140x 595x542
Packed HxWxD	mm	250x645x670	250x645x670
Weights Gross / net	kg	20,3 / 18,0	20,3 / 18,0
<b>TECHNICAL FEATURES</b>			
Voltage/Frequency	V/Hz	-	220-240 / 50-60
Cable length		-	1,5 m

Colours legend: BK= Black IX= St. steel WH= White

# TECHNICAL FEATURES MICROWAVE OVENS

		GMI253	GMI203
Type		Built-in microwave	Built-in microwave
Colour		IX	IX
<b>MAIN FEATURES</b>			
Oven Capacity	lt	25	20
Functions		3	3
Door Opening		Push button	Push button
<b>BASIC FEATURES</b>			
Digital clock		•	•
Timer	m	0 to 95' with sound signal	digital 95'
Rotary plate		31,5 cm	24,5 cm
Defrost functions by time		•	•
Defrost functions by weight		•	•
Controls		digital	easy-tronic
Auto menus		8	•
Power levels		5	5
Microwave power	W	900	800
Safety child lock		•	•
Rack to cook "au gratin"		•	-
Inner light		•	•
Adjustable feet		•	-
Power cord with plug		•	-
End cooking signal		•	•
Preset function		-	•
Interior Cavity		St. steel	St. steel
<b>TECHNICAL FEATURES</b>			
Voltage/Frequency	V/Hz	230 / 50	230 / 50
<b>WEIGHTS &amp; DIMENSIONS</b>			
Product with frame WxDxH	mm	594x388x390	595x316x382
Built-in WxDxH	mm	see technical draw	see technical draw
Cavity WxDxH	mm	328x368x226	295x315,8x218

Colours legend: IX= St. steel

# TECHNICAL FEATURES INDUCTION HOBS

		GTIP14BK	GTIP84BK	GTI642	GTI632
Width	cm	100	80	60	60
Type		Induction	Induction	Induction	Induction
Colours		Black glass	Black glass	Black glass	Black glass
<b>SPECIFICATION</b>					
Type of control		4 Sliders touch control	1 Slider touch control	Touch control	Touch control
Controls position		Front	Front	Front	Front
Levels of power	n°	9	9	9	9
Front left heating element	mm/W	Ø 210 - 2.900/3.700	Ø 280 - 2.600/3.700	Ø 190 - 1.400/2.000	Ø 190 - 1.400/2.000
Rear left heating element	mm/W	Ø 210 - 2.900/3.700	Ø 180 - 2.300/3.000	Ø 160 - 1.200/1.400	Ø 160 - 1.200/1.400
Central heating element	mm/W	-	-	-	-
Rear right heating element	mm/W	Ø 210 - 2.900/3.700	Ø 180 - 2.300/3.000	Ø 200 - 2.300/3.000	Ø 250 - 2.300/3.000
Front right heating element	mm/W	Ø 210 - 2.900/3.700	Ø 210 - 2.900/3.700	Ø 160 - 1.200/1.400	-
<b>FEATURES</b>					
Total power	W	7.400	7.400	7.100	6.400
On/Off		•	•	•	•
Stop&Go		•	•	-	-
Booster		4 double	4 double	•	•
Heat up		•	•	-	-
Timer		•	•	•	•
Minute Minder		•	•	•	•
Automatic temperatures	°C	42 - 70 - 94	42 - 70	-	-
Pot diameter detector/ Pan detection		•	•	•	•
Residual Heat		•	•	•	•
Child safety lock (Locking touch)		•	•	•	•
Overflow safety device		•	•	•	•
Automatic Stop		•	•	•	•
Power management		•	•	•	•
Power cord		•	•	•	•
Cable length	mm	1500	1500	1120	1120
Scraper		-	-	•	•
Voltage/Frequency	V/Hz	220-240 / 50-60	220-240 / 50-60	220-230 / 50-60	220-230 / 50-60
<b>DIMENSIONS</b>					
Product WxDxH	mm	1000x410x49	780x520x49	580x510	580x510
Built-in WxDxH	mm	985x395	750x490	560x490	560x490

		GTIP42BK	GTIPW41BK	GTPN42BK	GTI322
Width	cm	38	38	38	30
Type		Induction	Induction wok	Teppanyaki	Induction
Colours		Black glass	Black glass	St. steel grill plate	Black glass
<b>SPECIFICATION</b>					
Type of control		2 Sliders touch control	1 Slider touch control	Touch control	Touch control
Controls position		Front	Front	Front	Front
Levels of power	n°	9	9	9	9
Front left heating element	mm/W	Ø 220x180 - 2.100/2.600/3.700	Ø 310 - 2.300/3.000	Ø 1.400	Ø 160 - 1.400
Rear left heating element	mm/W	Ø 220x180 - 2.100/2.600/3.700	-	Ø 1.400	Ø 200 - 1.400/2.000 Ø
Central heating element	mm/W	-	-	-	-
Rear right heating element	mm/W	-	-	-	-
Front right heating element	mm/W	-	-	-	-
<b>FEATURES</b>					
Total power	W	3.700	3.000	2.800	3.400
On/Off		•	•	-	•
Stop&Go		•	•	-	-
Booster		•	•	-	•
Heat up		•	•	-	-
Timer		•	•	•	•
Minute Minder		•	•	•	•
Automatic temperatures	°C	42 - 70 - 94	42 - 70 - 94	-	-
Pot diameter detector/ Pan detection		•	•	-	•
Residual Heat		•	•	•	•
Child safety lock (Locking touch)		•	•	•	•
Overflow safety device		•	•	•	•
Automatic Stop		•	•	•	•
Power management		•	•	•	-
Power cord		•	•	•	•
Cable length	mm	1.500	1.500	1.500	1.500
Scraper		-	-	-	-
Voltage/Frequency	V/Hz	220-240 / 50-60	220-240 / 50-60	220-240 / 50-60	220-240 / 50-60
<b>DIMENSIONS</b>					
Product WxDxH	mm	520x380x48	520x380x121	520x380x64	290x510
Built-in WxDxH	mm	490x360	490x370	490x360	264x482



# TECHNICAL FEATURES CERAMIC GLASS HOBS

		GTH96TIX - GTH96T	GTH75TIX - GTH75T	GTH64TIX - GTH64TF	GTH6TSIX - GTH64TS
Size	cm	90	75	60	60
Type		Ceramic glass	Ceramic glass	Ceramic glass	Ceramic glass
Glass colour		Black: with frame/no frame	Black: with frame/no frame	Black: with frame/no frame	Black: with frame/no frame
<b>FEATURES</b>					
Controls		Touch	Touch	Touch	Touch
Total power	W	8.100	6.700	6.400	6.000
<b>SPECIFICATION</b>					
Extensible hotplates		2	2	-	-
Nr of power levels		9	9	9	9
Controls position		Front	Side	Front	Side
Front left heating element	mm/W	Ø 145 - 1.200	Ø 120/210 - 700/2.100	Ø 210 - 2.200	Ø 180 - 1.800
Rear left heating element	mm/W	Ø 170/265 - 1.400/2.200	Ø 145 - 1.200	Ø 145 - 1.200	Ø 145 - 1.200
Central heating element	mm/W	Ø 180 - 1.800	-	-	-
Front right heating element	mm/W	Ø 120/180 - 750/1.700	Ø 145 - 1.200	Ø 145 - 1.200	Ø 145 - 1.200
Rear right heating element	mm/W	Ø 145 - 1.200	Ø 170/265 - 1.400/2.200	Ø 180 - 1.800	Ø 180 - 1.800
High-light		5	4	4	4
<b>FEATURES</b>					
Timer		•	•	•	-
Heat up		•	•	•	•
Electric cable		•	•	•	•
Voltage/Frequency	V/Hz	220-230-240 / 50-60	220-230-240 / 50-60	220-230-240 / 50-60	220-230-240 / 50-60
Scraper		•	•	•	•
<b>SAFETY</b>					
Residual heat indicator		•	•	•	•
Child safety lock		•	•	•	•
Overflow safety device		•	•	•	•
Automatic stop		•	•	•	•
<b>DIMENSIONS</b>					
Product WxDxH	mm	900x510x48	770x510x48	580x510x48	580x510x48
Built-in WxDxH	mm	880x490x48	750x490x48	560x490x48	560x490x48

		GTHP65T	GTH63TBK	GTH64KIX	GTHP42BK	GTH32K
Size	cm	60	60	60	38	30
Type		Ceramic glass	Ceramic glass	Ceramic glass	Ceramic glass	Ceramic glass
Glass colour		Black (no frame)	Black (no frame)	Black (with frame)	Black (no frame)	Black (no frame)
<b>FEATURES</b>						
Frame		-	-	•	-	-
Controls		Touch	Touch	Knobs	Touch	Knobs
Total power	W	6.700	5.400	6.000	3.000	3.000
<b>SPECIFICATION</b>						
Extensible hotplates		2	1	-	-	-
Nr of power levels		9	9	9	9	9
Controls position		Front	Front	Side	Front	Front
Front left heating element	mm/W	Ø 210/120 - 2.100/700	Ø 180 - 1.800	Ø 180 - 1.800	Ø 155 - 1.200	Ø 145 - 1.200
Rear left heating element	mm/W	Ø 145 - 1.200	Ø 145 - 1.200	Ø 145 - 1.200	Ø 190 - 1.800	Ø 180 - 1.800
Central heating element	mm/W	-	-	-	-	-
Front right heating element	mm/W	Ø 170/265 - 1.400/2.200	-	Ø 145 - 1.200	-	-
Rear right heating element	mm/W	Ø 145 - 1.200	Ø 275/210 - 2.400/1.500	Ø 180 - 1.800	-	-
High-light		4	3	4	2	2
<b>FEATURES</b>						
Memory		-	-	-	•	-
Timer		•	•	-	•	-
Heat up		•	-	-	•	-
Electric cable		•	•	•	•	•
Voltage/Frequency	V/Hz	220-240 / 50-60	220-230-240 / 50-60	220-230-240 / 50-60	220-240 / 50-60	220-230-240 / 50-60
Scraper		•	•	•	-	•
<b>SAFETY</b>						
Residual heat indicator		•	•	•	•	•
Child safety lock		•	•	-	•	-
Overflow safety device		•	•	-	•	-
Automatic stop		•	•	-	•	-
<b>DIMENSIONS</b>						
Product WxDxH	mm	580x510x48	580x510x48	580x510x48	520x380x45	510x290x48
Built-in WxDxH	mm	560x490x48	560x490x48	560x490x48	490x350x41	490x270x65

# TECHNICAL FEATURES CRYSTAL GAS HOBS

		GV955	GV755	GV64	GVP635H	GVP415H	GVP42H
Width	cm	90	70	60	60	38	38
Type		Crystal gas	Crystal gas	Crystal gas	Crystal gas	Crystal gas	Crystal gas
Colours		BK	BK	BK	BK	BK	BK
FEATURES							
Controls		Knobs	Knobs	Knobs	Knobs	Knobs	Knobs
Nr gas zones		5	5	4	3	1	2
Front left burner	W	1.000	1.000	3.000	1.000	-	-
Rear left burner	W	3.000	3.000	1.650	1.650	-	-
Front burner	W	3.500	3.500	-	-	5.000	1.000
Rear burner	W	-	-	-	-	-	3.000
Front right burner	W	1.650	1.650	1.000	3.500	-	-
Rear right burner	W	1.650	1.650	1.650	-	-	-
Flame failure device (FFD)		•	•	•	•	•	•
One hand ignition		•	•	•	•	•	•
Cast iron pan supports		-	-	-	•	•	•
DIMENSIONS							
Product HxWxD	mm	51x900x510	51x700x510	51x600x510	51x600x510	55x380x520	55x380x520
Built-in HxWxD	mm		50x550x480	50x550x480	50x550x480	350x495	350x495
Packaging HxWxD	mm		150x800x580	150x700x580	150x700x580	145x440x555	145x440x555

Colours legend: BK= Black

# TECHNICAL FEATURES GAS HOBS

		GT951H	GT955H	GT955	GT955N	GT96N	GT968N
Width	cm	90	90	90	90	90	90
Type		Gas	Gas	Gas	Gas	Gas	Gas
Colours		IX	IX - WH - BK	IX - WH - BK	IX - WH - BK	IX - WH - BK	IX - WH - BK
FEATURES							
Controls		Front	Front	Front	Front	Front	Front
Nr electric zones		-	-	-	-	-	2
Nr gas zones		5	5	5	5	6	4
Front left burner	W	4.500 - 800	1.000	1.000	1.000	1.000	1.000
Rear left burner	W	-	3.000	3.000	3.000	3.000	3.000
Front burner	W	1.000	3.800	3.800	3.800	1.750	Ø 180 - 2.000
Rear burner	W	1.750	-	-	-	3.000	Ø 145 - 1.500
Front right burner	W	1.750	1.750	1.750	1.750	1.750	1.750
Rear right burner	W	3.000	1.750	1.750	1.750	1.750	1.750
Flame failure device (FFD)		•	•	•	-	-	-
One hand ignition		•	•	•	•	•	•
PAN SUPPORTS							
Matt enamelled pan supports		-	-	•	•	•	•
Cast iron pan supports		•	•	-	-	-	-
DIMENSIONS							
Product HxWxD	mm	30x860x500	30x860x500	30x860x500	30x860x500	30x860x500	30x860x500
Built-in HxWxD	mm	30x830x480	30x830x480	30x830x480	30x830x480	30x830x480	30x830x480
Packaging HxWxD	mm	138x911x564	138x911x564	138x911x564	138x911x564	138x911x564	138x911x564

		GTL955	GTL955N	GTL968	GTL968N	GTS51H	GT851H
Width	cm	90	90	90	90	75	75
Type		Gas	Gas	Gas	Gas	Gas	Gas
Colours		IX - WH - BK	IX - WH - BK	IX - WH - BK	IX - WH - BK	IX	IX
FEATURES							
Controls		Side	Side	Side	Side	Front	Front
Nr electric zones		-	-	2	2	-	-
Nr gas zones		5	5	4	4	5	5
Front left burner	W	3.000	3.000	1.750	1.750	3.000	4.500 - 800
Rear left burner	W	1.750	1.750	3.000	3.000	1.750	-
Front burner	W	3.300	3.300	Ø 180 - 2.000	Ø 180 - 2.000	1.000	1.000
Rear burner	W	-	-	Ø 145 - 1.500	Ø 145 - 1.500	1.750	1.750
Front right burner	W	1.000	1.000	1.000	1.000	4.500 - 800	1.750
Rear right burner	W	1.750	1.750	1.750	1.750	-	3.000
Flame failure device (FFD)		•	-	•	-	•	•
One hand ignition		•	•	•	•	•	•
PAN SUPPORTS							
Matt enamelled pan supports		•	•	•	•	-	-
Cast iron pan supports		-	-	-	-	•	•
DIMENSIONS							
Product HxWxD	mm	30x860x500	30x860x500	30x860x500	30x860x500	70x740x500	30x740x500
Built-in HxWxD	mm	30x830x480	30x830x480	30x830x480	30x830x480	70x720x480	30x560x480
Packaging HxWxD	mm	138x911x564	138x911x564	138x911x564	138x911x564		138x791x564

Colours legend: BK= Black IX= St. steel WH= White

		GT842H	GT871H	GT755H	GT755	GT755N	GT731
Width	cm	75	75	70	70	70	70
Type		Gas	Gas	Gas	Gas	Gas	Gas
Colours		IX	IX	IX - WH - BK	IX - WH - BK	IX - WH - BK	IX
<b>FEATURES</b>							
Controls		Front	Front	Front	Front	Front	Front
Nr electric zones		-	-	-	-	-	-
Nr gas zones		4	5	5	5	5	3
Front left burner	W	4.500 - 800	1.000	1.000	1.000	1.000	4.500 - 800
Rear left burner	W	-	3.000	3.000	3.000	3.000	-
Front burner	W	1.000	4.500 - 800	3.300	3.300	3.300	-
Rear burner	W	1.750	-	-	-	-	-
Front right burner	W	3.300	1.750	1.750	1.750	1.750	1.750
Rear right burner	W	-	1.750	1.750	1.750	1.750	1.750
Flame failure device (FFD)		•	•	•	•	-	•
One hand ignition		•	•	•	•	•	•
<b>PAN SUPPORTS</b>							
Matt enamelled pan supports		-	-	-	•	•	•
Cast iron pan supports		•	•	•	-	-	-
<b>DIMENSIONS</b>							
Product HxWxD	mm	30x740x500	30x740x500	30x685x500	30x685x500	30x685x500	30x685x500
Built-in HxWxD	mm	30x560x480	30x560x480	30x560x480	30x560x480	30x560x480	30x560x480
Packaging HxWxD	mm	138x791x564	138x791x564	138x736x564	138x736x564	138x736x564	138x736x564

		GT731N	GT685H	GT64H	GT64	GT64N	GT685
Collection		Contemporaneo	Contemporaneo	Contemporaneo	Contemporaneo	Contemporaneo	Contemporaneo
Width	cm	70	60	60	60	60	60
Type		Gas	Gas	Gas	Gas	Gas	Gas
Colours		IX	IX - WH - BK	IX - WH - BK	IX - WH - BK	IX - WH - BK	IX - WH - BK
<b>FEATURES</b>							
Controls		Front	Front	Front	Front	Front	Front
Nr electric zones		-	-	-	-	-	-
Nr gas zones		3	4	4	4	4	4
Front left burner	W	4.500 - 800	3.800	1.000	1.000	1.000	3.800
Rear left burner	W	-	1.000	3.000	3.000	3.000	1.000
Front burner	W	-	-	-	-	-	-
Rear burner	W	-	-	-	-	-	-
Front right burner	W	1.750	1.750	1.750	1.750	1.750	1.750
Rear right burner	W	1.750	1.750	1.750	1.750	1.750	1.750
Flame failure device (FFD)		-	•	•	•	-	•
One hand ignition		•	•	•	•	•	•
<b>PAN SUPPORTS</b>							
Matt enamelled pan supports		•	-	-	•	•	•
Cast iron pan supports		-	•	•	-	-	-
<b>DIMENSIONS</b>							
Product HxWxD	mm	30x685x500	30x585x500	30x585x500	30x585x500	30x585x500	30x585x500
Built-in HxWxD	mm	30x560x480	30x560x480	30x560x480	30x560x480	30x560x480	30x560x480
Packaging HxWxD	mm	138x736x564	138x636x564	138x636x564	138x636x564	138x636x564	138x636x564

		GT685N	GT645	GT647	GT647N	GTL64	GTL64N
Width	cm	60	60	60	60	60	60
Type		Gas	Gas	Gas	Gas	Gas	Gas
Colours		IX - WH - BK	IX	IX - WH - BK	IX - WH - BK	IX - WH - BK	IX - WH - BK
<b>FEATURES</b>							
Controls		Front	Front	Front	Front	Side	Side
Nr electric zones		-	-	1	1	-	-
Nr gas zones		4	4	3	3	4	4
Front left burner	W	3.800	3.000	1.000	1.000	3.000	3.000
Rear left burner	W	1.000	-	3.000	3.000	1.750	1.750
Front burner	W	-	1.000	-	-	-	-
Rear burner	W	-	1.750	-	-	-	-
Front right burner	W	1.750	3.300	1.750	1.750	1.000	1.000
Rear right burner	W	1.750	-	Ø 145 - 1.500	Ø 145 - 1.500	1.750	1.750
Flame failure device (FFD)		-	•	•	-	•	-
One hand ignition		•	•	•	•	•	•
<b>PAN SUPPORTS</b>							
Matt enamelled pan supports		•	•	•	•	•	•
Cast iron pan supports		-	-	-	-	-	-
<b>DIMENSIONS</b>							
Product HxWxD	mm	30x585x500	30x585x500	30x585x500	30x585x500	30x585x500	30x585x500
Built-in HxWxD	mm	30x560x480	30x560x480	30x560x480	30x560x480	30x560x480	30x560x480
Packaging HxWxD	mm	138x636x564	138x636x564	138x636x564	138x636x564	138x636x564	138x636x564

Colours legend: BK= Black IX= St. steel WH= White

# TECHNICAL FEATURES GAS/ELECTRIC HOBS AND DOMINO

		GTL647N	GTL640	GT415H	GT42H	GT315	GT315N
Width	cm	60	60	37	37	30	30
Type		Gas	Electric	Gas	Gas	Gas	Gas
Colours		IX - WH	IX - WH	IX	IX	IX	IX
<b>FEATURES</b>							
Controls		Side	Side	Front	Front	Front	Front
Nr electric zones		1	4	-	-	-	-
Nr gas zones		3	-	1	2	1	1
Front left burner	W	3.000	Ø 180 - 2.000	-	-	-	-
Rear left burner	W	Ø 145 - 1.500	Ø 145 - 1.500	-	-	-	-
Front burner	W	-	-	3.800	1.000	3.300	3.300
Rear burner	W	-	-	-	3.000	-	-
Front right burner	W	1.000	Ø 145 - 1.000	-	-	-	-
Rear right burner	W	1.750	Ø 180 - 1.500	-	-	-	-
Flame failure device (FFD)		-	-	•	•	•	-
One hand ignition		•	-	•	•	•	•
<b>PAN SUPPORTS</b>							
Matt enamelled pan supports		•	-	-	-	•	•
Cast iron pan supports		-	-	•	•	-	-
<b>DIMENSIONS</b>							
Product HxWxD	mm	30x585x500	30x585x500	33x370x500	33x370x500	30x290x510	30x290x510
Built-in HxWxD	mm	30x560x480	30x560x480	33x350x490	33x350x490	30x265x480	30x265x480
Packaging HxWxD	mm	138x636x564	138x636x564	143x430x564	143x430x564	138x342x564	138x342x564

		GT32	GT32N	GT320	GT3B	GT3F	GTH32K
Width	cm	30	30	30	30	30	30
Type		Gas	Gas	Electric	Gas	Gas	Gas
Colours		IX	IX	IX	IX	IX	IX
<b>FEATURES</b>							
Controls		Front	Front	Front	Front	Front	Front
Nr electric zones		-	-	2	1	1	-
Nr gas zones		2	2	-	-	-	-
Nr highlight zones		-	-	-	-	-	2
Front left burner	W	-	-	-	-	-	-
Rear left burner	W	-	-	-	-	-	-
Front burner	W	1.000	1.000	Ø 145 - 1.500	2.400	2.300	Ø 140 - 1.200
Rear burner	W	3.000	3.000	Ø 180 - 2.000	-	-	Ø 180 - 1.800
Front right burner	W	-	-	-	-	-	-
Rear right burner	W	-	-	-	-	-	-
Flame failure device (FFD)		•	-	-	-	-	-
One hand ignition		•	•	-	-	-	-
<b>PAN SUPPORTS</b>							
Matt enamelled pan supports		•	•	-	•	-	-
Cast iron pan supports		-	-	-	-	-	-
<b>DIMENSIONS</b>							
Product HxWxD	mm	30x290x510	30x290x510	30x290x510	50x290x510	155x290x510	40x290x510
Built-in HxWxD	mm	30x265x480	30x265x480	30x265x480	50x265x480	155x265x480	40x265x480
Packaging HxWxD	mm	138x342x564	138x342x564	138x342x564	138x342x564	138x342x564	138x342x564

Colours legend: BK= Black IX= St. steel WH= White

		<b>GHB127</b>	<b>GHB98</b>	<b>GHS98</b>	<b>GHS68</b>
Dimensions	cm	120	90	90	60
Type		Wall	Island	Wall Glass	Wall Glass
Colour		IX	IX	IX	IX
<b>FEATURES</b>					
Suction power	m³/h	740	600 (700)	735	735
Noise level - max speed Power	dBa	70	50	69	69
Noise level - speed level 1	dBa	65	-	59	59
N° of blower		1	1	1	1
Speeds		3+1	3+1	2+1	2+1
Booster		•	•	•	•
Delay start		•	-	-	-
Clean Air		•	-	-	-
Saturation filter alarm		•	•	-	-
Lamps		3x1,5W led	4x20W halogen	2x20W halogen	2x20W halogen
Perimetral aspiration		-	•	-	-
Grease filters (Aluminium)		4 baffle filters	•	2	2
Grease filters (Acrylic)		-	-	-	-
Grease filters (Metalic)		-	-	-	-
Carbon filters		•	•	1	1
Controls		Electronic lighted button	Electronic lighted button	Electronic lighted button	Electronic lighted button
Air outlet size	mm	Ø 150 / 120	Ø 150 / 120	Ø 150 / 120	Ø 150 / 120
Plug		-	-	-	-
Cable length	cm	100	120	150	150
No return valve		•	•	•	•
Motor power	W	250	250	250	250
Voltage/Frequency	V/Hz	230-240 / 50-60	220-240 / 50	230-240 / 50	230-240 / 50
Efficiency energy class <sup>(1)</sup>		A	D	C	C
<b>DIMENSIONS</b>					
Product HxWxD	mm	855-1320x1200x500	see drawing	see drawing	see drawing
Packing HxWxD	mm	615x1295x 600	-	1020x510x655	-

		<b>GHR98</b>	<b>GHB98</b>	<b>GHP98</b>	<b>GHP68</b>
Dimensions	cm	90	90	90	60
Type		Wall Curved	Wall Box	Wall Chimney	Wall Chimney
Colour		IX	IX	IX	IX
<b>FEATURES</b>					
Suction power	m³/h	735	735	735	735
Noise level - max speed Power	dBa	69	69	69	69
Noise level - speed level 1	dBa	59	59	59	59
N° of blower		1	1	1	1
Speeds		2+1	2+1	3+1	3+1
Booster		•	•	•	•
Delay start		-	-	•	•
Clean Air		-	-	-	-
Saturation filter alarm		-	-	•	•
Lamps		2x20W halogen	2x20W halogen	2x20W halogen	2x20W halogen
Perimetral aspiration		-	-	-	-
Grease filters (Aluminium)		2	3	-	-
Grease filters (Acrylic)		-	-	-	-
Grease filters (Metalic)		-	-	3	2
Carbon filters		2	1	2	2
Controls		Electronic lighted button	Electronic lighted button	Electronic lighted button	Electronic lighted button
Air outlet size	mm	Ø 150 / 120	Ø 150 / 120	Ø 120	Ø 120
Plug		-	-	-	-
Cable length	cm	150	150	150	150
No return valve		•	•	•	•
Motor power	W	250	250	250	250
Voltage/Frequency	V/Hz	230-240 / 50	230-240 / 50	230-240 / 50	230-240 / 50
Efficiency energy class <sup>(1)</sup>		C	C	C	C
<b>DIMENSIONS</b>					
Product HxWxD	mm	see drawing	see drawing	900x500x280	600x500x280
Packing HxWxD	mm	985x470x625	985x470x625	958x425x560	658x425x560

<sup>(1)</sup> from January 2015, according to regulation 65/2014

Colours legend: BK= Black IX= St. steel WH= White

# TECHNICAL FEATURES HOODS

		GHP94	GHP64	GHC95	GHC65
Dimensions	cm	90	60	90	60
Type		Wall Chimney	Wall Chimney	Standard	Standard
Colour		IX	IX	IX	IX
<b>FEATURES</b>					
Suction power	m³/h	435	435	360	360
Noise level - max speed Power	dBa	63	63	65	65
Noise level - speed level 1	dBa	51	51	55	55
N° of blower		1	1	2	2
Speeds		3	3	3	3
Booster		-	-	-	-
Delay start		-	-	-	-
Clean Air		-	-	-	-
Saturation filter alarm		-	-	-	-
Lamps		2x28W candle halogen	2x28W candle halogen	2x28W	2x28W
Perimetral aspiration		-	-	-	-
Grease filters (Aluminium)		3	2	-	-
Grease filters (Acrylic)		-	-	-	-
Grease filters (Metalic)		-	-	1	1
Carbon filters		2	2	1	1
Controls		Push button	Push button	Push button	Push button
Air outlet size	mm	Ø 120	Ø 120	Ø 123	Ø 123
Plug		-	-	-	-
Cable length	cm	150	150	175	175
No return valve		•	•	•	•
Motor power	W	135	135	300	300
Voltage/Frequency	V/Hz	230-240 / 50	230-240 / 50	220-240 / 50	220-240 / 50
Efficiency energy class <sup>(1)</sup>		E	E	F	F
<b>DIMENSIONS</b>					
Product HxWxD	mm	900x500x280	600x500x280	900x495x140	600x495x140
Packing HxWxD	mm	935x420x555	635x420x555	965x195x560	665x195x560

		GHL90	GHL60	GHE90	GHE60
Dimensions	cm	90	60	90	60
Type		Undercabinet	Undercabinet	Undercabinet	Undercabinet
Colour		IX - WH - BK	IX - WH - BK	SI	SI
<b>FEATURES</b>					
Suction power	m³/h	207	207	171	171
Noise level - max speed Power	dBa	61	61	61	61
Noise level - speed level 1	dBa	-	-	-	-
N° of blower		1	1	1	1
Speeds		3	3	3	3
Booster		-	-	-	-
Delay start		-	-	-	-
Clean Air		-	-	-	-
Saturation filter alarm		-	-	-	-
Lamps		1x28W	1x28W	1x28W	1x28W
Perimetral aspiration		-	-	-	-
Grease filters (Aluminium)		-	-	-	-
Grease filters (Acrylic)		1	1	1	1
Grease filters (Metalic)		-	-	-	-
Carbon filters		1	1	1	1
Controls		Slider	Slider	Slider	Slider
Air outlet size	mm	Ø 120	Ø 120	Ø 120	Ø 120
Plug		-	-	-	-
Cable length	cm	100	100	100	100
No return valve		-	-	-	-
Motor power	W	110	110	110	110
Voltage/Frequency	V/Hz	220-240 / 50	220-240 / 50	220-240 / 50	220-240 / 50
Efficiency energy class <sup>(1)</sup>		E	E	E	E
<b>DIMENSIONS</b>					
Product HxWxD	mm	see drawing	see drawing	see drawing	see drawing
Packing HxWxD	mm	960x230x610	630x230x610	990x243x391	625x180x326

<sup>(1)</sup> from January 2015, according to regulation 65/2014

Colours legend: BK= Black IX= St. steel WH= White SI= Metallic Silver

MARKETING  
Glem Gas

AD & GRAPHIC DESIGN  
Ikos

*Glem Gas S.p.A. reserves the right unilaterally at any time to change  
its own products without altering the catalogue contents accordingly.*







Glem Gas S.p.A.  
via Modenese, 4266  
41018 San Cesario S.P.  
Modena - Italy  
tel. +39 059 959111  
fax +39 059 959150  
info@glemgas.com  
www.glemgas.com